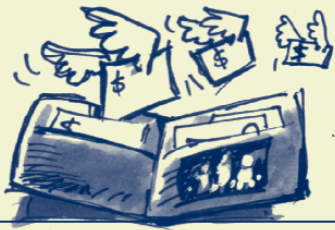


Protect...

YOUR WALLET

by avoiding fines



YOUR REPUTATION

for following best practice



YOUR ENVIRONMENT

by doing the right thing



KEEP THE
SOIL
ON THE
SITE

AND YOU'LL BE RIGHT

Landscape Contractors

follow industry best practice to:

- arrange timely deliveries, properly located
- avoid run-off of materials
- clean-up behind the sediment fence(s)

Fines exceed

\$1,500

for small business, with even larger penalties through the courts

Enforcement is by Council and the NSW Department of Environment and Conservation

For further information contact the City of Sydney on **1300 651 301**



Products and services

Look under the following headings in the Yellow Pages www.yellowpages.com.au for suppliers of products and services:

- Erosion Control and Soil Stabilisation
- Oil & Chemical Spill Recovery or Dispersal
- Cleaning Contractors – Steam, Pressure, Chemical Etc.
- Brick &/Or Brick Wall Cleaning.



KEEP THE
SOIL
ON THE
SITE
Landscapers



Landscapers

DELIVERIES need to be close to the work but ...

- Not on the access track..
- Behind the sediment fence.
- Away from gullies and depressions where water can flow.
- Protected to save on damage theft or erosion.

CLEAN UP of tools and equipment...

- Must be behind the sediment fence.
- Must use the fence to trap pollutants.

MUD on ROADS is not permitted...

- Use the all-weather access.
- Avoid wet weather deliveries or reschedule.
- Ensure deliveries are planned and located where required.
- Clean up with shovel or broom.

MAINTAIN the SEDIMENT FENCE until after work is finished...

- Until grass has established, and there is 70% or more site cover.
- Explain to supervisor and homeowner why controls must be maintained.

EARTH MOVING creates erosion and sedimentation issues...

- Work upslope of sediment fences or reinstate them if removed temporarily.
- Maintain the grass on site/nature strip as a back-up sediment filter.

AT THE END OF THE DAY

- Are all stockpiles protected from rain and run-off?
- Sediment fence(s) all OK
- Check no tracking of sediment onto the road
- Conduct clean-up behind the sediment fence

**YOU ARE LEGALLY RESPONSIBLE FOR ANY DAMAGE TO THE SEDIMENT CONTROLS
IF YOU CAN'T FIX THEM, MAKE SURE YOU CALL THE SITE SUPERVISOR.**

