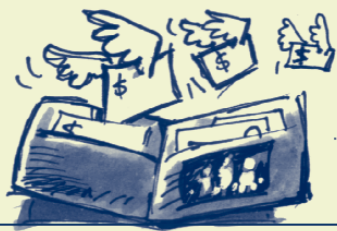


# Protect...

## YOUR WALLET

by avoiding fines



## YOUR REPUTATION

for following best practice



## YOUR ENVIRONMENT

by doing the right thing



KEEP THE  
SOIL  
ON THE  
SITE

AND YOU'LL BE RIGHT

## Excavators and Plant Operators

follow industry best practice to:

**Keep the soil on the site.**

Fines exceed

# \$1,500

for small business, with even larger penalties through the courts

**Enforcement** is by Council and the NSW Department of Environment and Conservation

For further information contact the City of Sydney on **1300 651 301**



### Products and services

Look under the following headings in the Yellow Pages [www.yellowpages.com.au](http://www.yellowpages.com.au) for suppliers of products and services:

- Erosion Control and Soil Stabilisation
- Oil & Chemical Spill Recovery or Dispersal
- Cleaning Contractors – Steam, Pressure, Chemical Etc.
- Brick &/Or Brick Wall Cleaning.

KEEP THE  
SOIL  
ON THE  
SITE

# Excavators



CITY OF SYDNEY

# Excavators

## Cover your tracks

### Minimise water run-off

- Direct water around the construction site.
- Retain all soil behind the sediment fence.
- Provide necessary drainage to capture all run-off behind the sediment fence.

### Check with the site supervisor

- The extent of run-off controls.
- Who should erect and repair the sediment fences.
- Stockpile locations.
- Site planning and layout.



## AT THE END OF THE DAY

### Create all-weather access

- Establish one point to enter and leave.
- This provides vehicle traction and it creates vehicle shakedown.
- All-weather access keeps the soil on the site.

### Minimise footpath Disturbance

- Use the grass as a back up sediment filter.
- Save on site repairs as you cover your tracks.

- Check all sediment fences are OK (or put back)
- Ensure site access is working properly
- Keep your vehicle tracks clean
- Shovel any clods behind the sedimentation fence

**YOU ARE LEGALLY RESPONSIBLE FOR ANY DAMAGE TO THE SEDIMENT CONTROLS  
IF YOU CAN'T FIX THEM, MAKE SURE YOU CALL THE SITE SUPERVISOR.**

