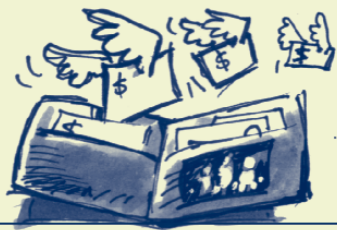


Protect...

YOUR WALLET

by avoiding fines



YOUR REPUTATION

for following best practice



YOUR ENVIRONMENT

by doing the right thing



KEEP THE
SOIL
ON THE
SITE

AND YOU'LL BE RIGHT

Bricklayers and Labourers

follow industry best practice to:

- protect sand stockpiles from run-off
- locate brick saws behind the sediment fence
- clean up behind the sediment fence
- maintain the sediment fence

Fines exceed

\$1,500

for small business, with even larger penalties through the courts

Enforcement is by Council and the NSW Department of Environment and Conservation

For further information contact the City of Sydney on **1300 651 301**



Products and services

Look under the following headings in the Yellow Pages www.yellowpages.com.au for suppliers of products and services:

- Erosion Control and Soil Stabilisation
- Oil & Chemical Spill Recovery or Dispersal
- Cleaning Contractors – Steam, Pressure, Chemical Etc.
- Brick &/Or Brick Wall Cleaning.

KEEP THE
SOIL
ON THE
SITE

Bricklayers



Bricklayers

DELIVERIES need to be close to the work but ...

- Not on the stabilised entrance.
- Behind the sediment fence.
- Leave space for other trades and deliveries.
- Drivers/trades must re-instate the sediment fence if it is damaged during deliveries.

BRICK CLEANING is messy and can pollute soil and water so:

- Use trained and skilled operators only.
- Ensure all run-off is contained behind sediment fences.

CLEAN-UP of tools and equipment must be behind the sediment fence

- Use the fence to trap pollutants.



MATERIALS such as sand must be:

- Behind the sediment fence and off the access track.
- Away from gullies and depressions where water can flow.
- Covered to save on downtime.

BRICK SAWS are messy so:

- Locate them behind the sediment fence.
- Use the sediment fence to trap and clean the water.

AT THE END OF THE DAY

- Are sand stockpiles protected from rain and run-off?
- Clean-up done behind the sediment fence?
- Is cement and sand covered and protected?
- Are the sediment fences all OK?

YOU ARE LEGALLY RESPONSIBLE FOR ANY DAMAGE TO THE SEDIMENT CONTROLS IF YOU CAN'T FIX THEM, MAKE SURE YOU CALL THE SITE SUPERVISOR.

