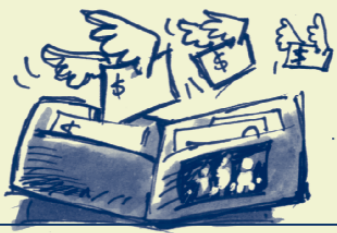


Protect...

YOUR WALLET

by avoiding fines



YOUR REPUTATION

for following best practice



YOUR ENVIRONMENT

by doing the right thing



KEEP THE
SOIL
ON THE
SITE

AND YOU'LL BE RIGHT

Plasterboard Fixers and Painters

follow industry best practice to:

- minimise wastes
- maintain sediment fences
- washdown behind sediment fences

Fines exceed

\$1,500

for small business, with even larger penalties through the courts

Enforcement is by Council and the NSW Department of Environment and Conservation

For further information contact the City of Sydney on **1300 651 301**



Products and services

Look under the following headings in the Yellow Pages www.yellowpages.com.au for suppliers of products and services:

- Erosion Control and Soil Stabilisation
- Oil & Chemical Spill Recovery or Dispersal
- Cleaning Contractors – Steam, Pressure, Chemical Etc.
- Brick &/Or Brick Wall Cleaning.

CITY OF SYDNEY

KEEP THE
SOIL
ON THE
SITE

Plasterers + Painters



Plasterboard

Fixers + Painters

PLASTERBOARD WASTES can be useful...

- Use them where you can on the job.
- Recycle where possible by reprocessing (keep clean and dry).
- Capture all dust and off-cuts.
- Use a trigger hose to minimise water run-off.

PAINT storage and disposal

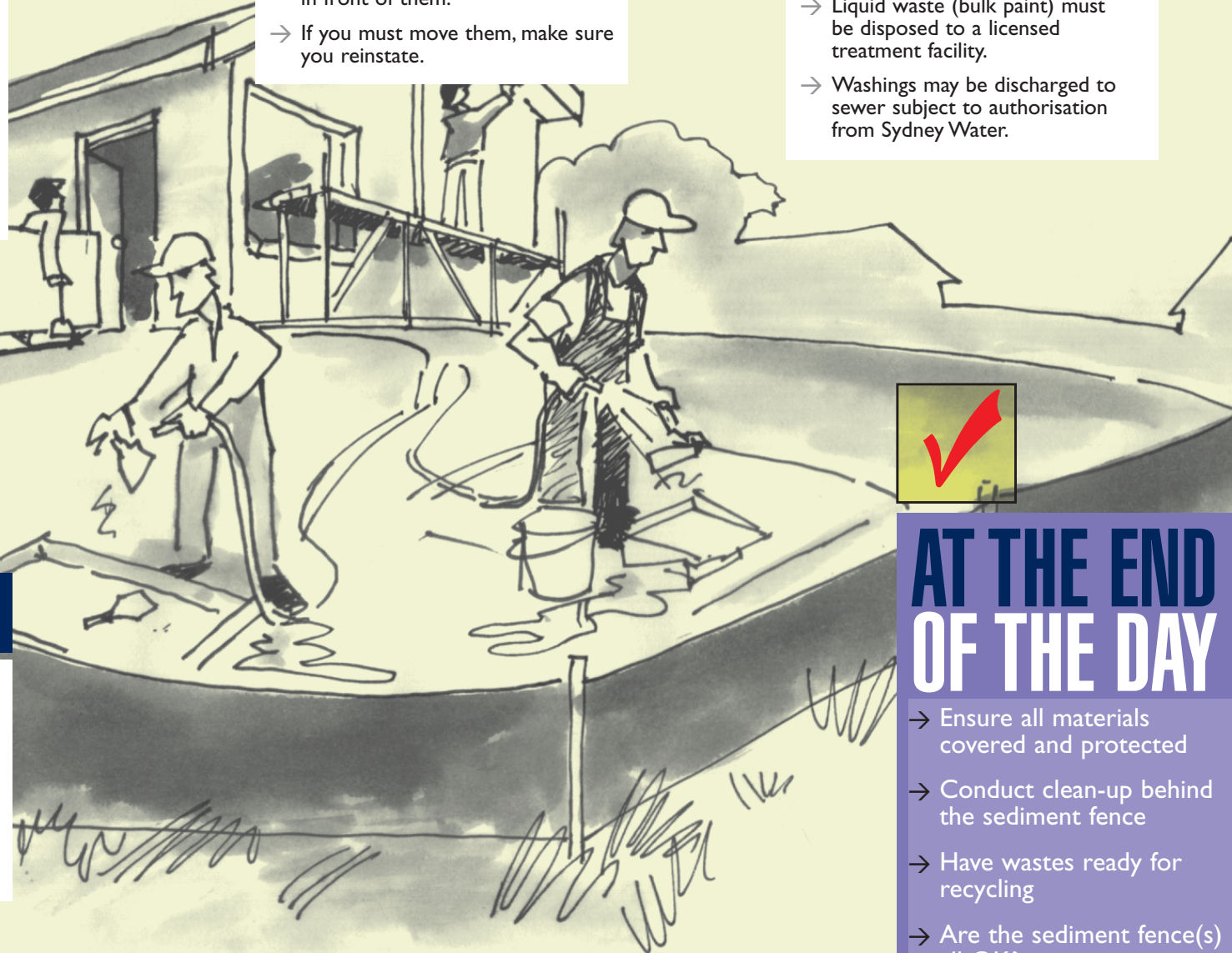
- Ensure paints and equipment are stored away from stormwater drains.
- Have spill prevention and clean-up procedures in place.
- Solid waste (dry paint, brushes, rollers etc.) can be disposed into waste skips.

SEDIMENT FENCES are necessary to clean the water run-off so...

- DON'T run over them or deliver in front of them.
- If you must move them, make sure you reinstate.

WASH DOWN tools and equipment...

- Only clean water may be put into stormwater drains.
- Liquid waste (bulk paint) must be disposed to a licensed treatment facility.
- Washings may be discharged to sewer subject to authorisation from Sydney Water.



AT THE END OF THE DAY

- Ensure all materials covered and protected
- Conduct clean-up behind the sediment fence
- Have wastes ready for recycling
- Are the sediment fence(s) all OK?

**YOU ARE LEGALLY RESPONSIBLE FOR ANY DAMAGE TO THE SEDIMENT CONTROLS
IF YOU CAN'T FIX THEM, MAKE SURE YOU CALL THE SITE SUPERVISOR.**

