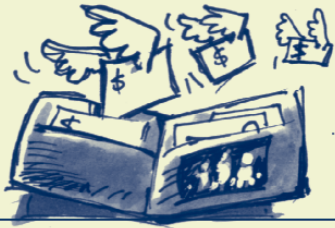


Protect...

YOUR WALLET

by avoiding fines



YOUR REPUTATION

for following best practice



YOUR ENVIRONMENT

by doing the right thing



KEEP THE
SOIL
ON THE
SITE

AND YOU'LL BE RIGHT

Delivery Drivers

follow industry best practice to:

- save on downtime
- reschedule deliveries
- gain easier access
- keep your customer happy

Fines exceed

\$1,500

for small business, with even larger penalties through the courts

Enforcement is by Council and the NSW Department of Environment and Conservation

For further information contact the City of Sydney on **1300 651 301**



Products and services

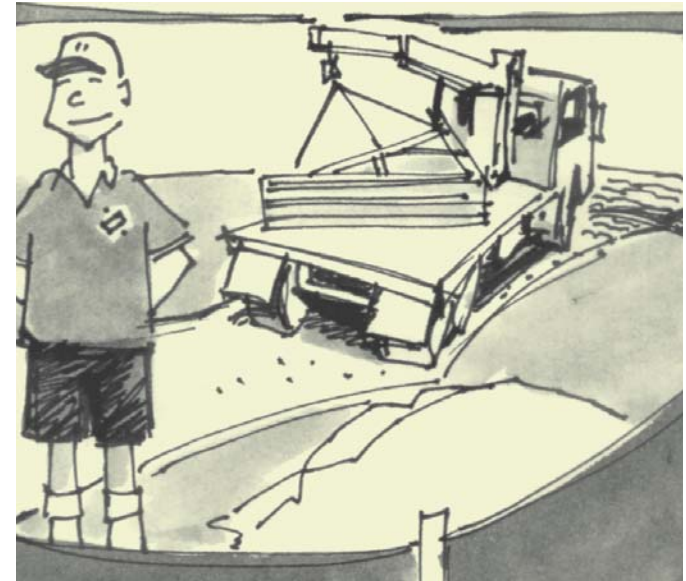
Look under the following headings in the Yellow Pages www.yellowpages.com.au for suppliers of products and services:

- Erosion Control and Soil Stabilisation
- Oil & Chemical Spill Recovery or Dispersal
- Cleaning Contractors – Steam, Pressure, Chemical Etc.
- Brick &/Or Brick Wall Cleaning.

CITY OF SYDNEY

KEEP THE
SOIL
ON THE
SITE

Delivery Drivers



Delivery Drivers

DELIVERIES

- Coordinate with the site supervisor.
- Get full delivery instructions.
- Find out about access restrictions or difficulties.

LOCATE DELIVERIES

- To avoid conflict with other trade deliveries.
- NOT on the all-weather access.
- To avoid driving over back filled trenches.
- As agreed with Site Supervisor.

SEDIMENT FENCES are necessary to clean the run-off so:

- If you must move them make sure you reinstate them.
- DON'T run over them or deliver in front of them especially sand or soil.

MUD ON ROADS is not permitted...

- Use the all-weather access or deliver with crane truck from the street.
- Resolve with the Supervisor whether delivery re-scheduling is required.

SUPERVISORS have a key role:

- To schedule orders in a timely manner.
- Plan and coordinate construction site layout.
- Ensure all access and sediment controls are in place.

SAFETY IS ALWAYS AN ISSUE

- Drivers decide when delivery is safe or not.
- All parties have a duty of care.
- Talk to the Site Supervisor about what is required.



AT THE END OF THE DAY

- Are all sediment fences in good condition?
- Your delivery doesn't restrict access?
- No tracking of soil onto the road?
- Supervisor informed of delivery and any access and sediment problems?
- Call backs avoided?

**YOU ARE LEGALLY RESPONSIBLE FOR ANY DAMAGE TO THE SEDIMENT CONTROLS
IF YOU CAN'T FIX THEM, MAKE SURE YOU CALL THE SITE SUPERVISOR.**

