

## Quay Street

The City is upgrading several streets and public spaces in Haymarket, Chinatown to improve walking and cycling in the city centre.

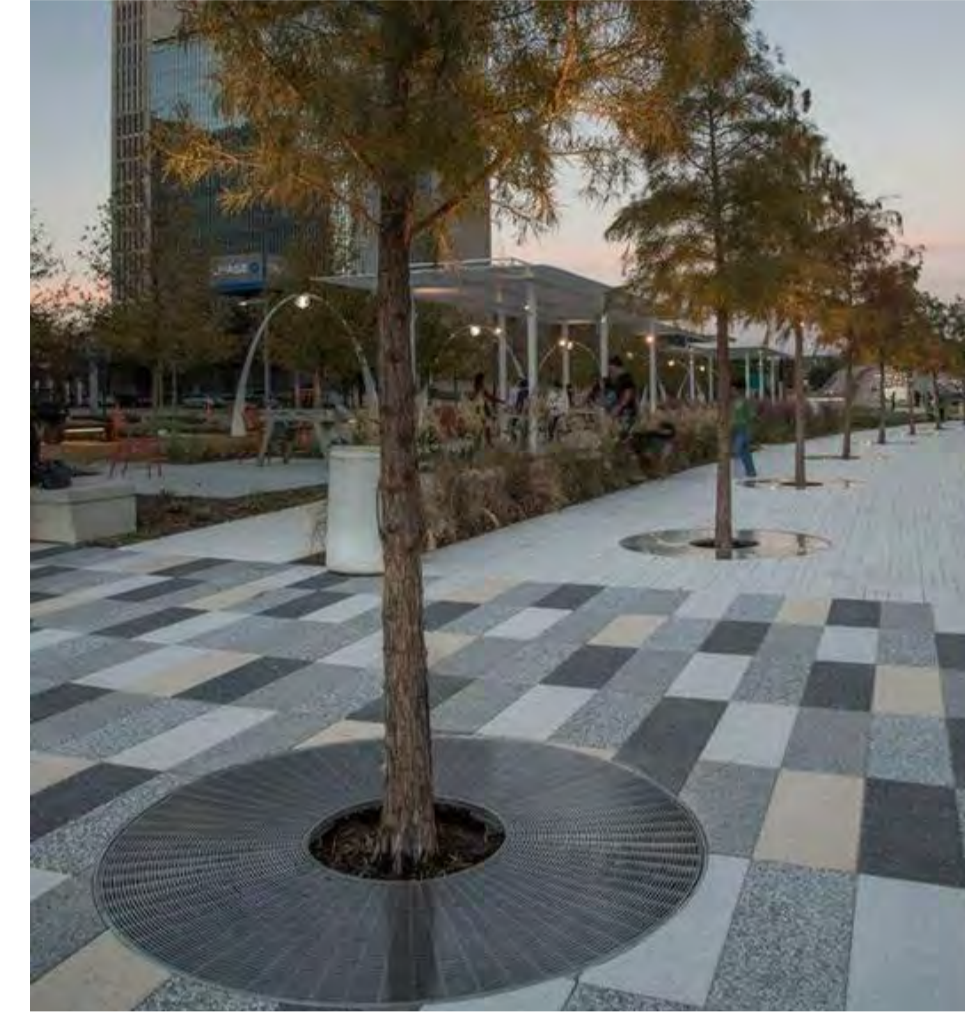
Quay Street is a popular walking connection between Central and Darling Quarter.

Proposed improvements include:

1. Wider footpath on the western side of Quay Street to improve safety between George Street and Chinatown.
2. Closing Quay Street at Valentine Street to create a new public plaza with street trees, lighting and furniture.
3. A new shared path on the western side of George Street to Ultimo Road, creating a safe bike connection for the growing number of people riding.
4. Extended footpath and new pedestrian crossing on Thomas Street to improve safety and prioritise walking journeys.
5. New bike lanterns on George and Lee Streets to create a bike connection to Central Station. (with Approval from The Roads and Maritime Services)



paving pattern



paving pattern with tree pit



outdoor cafe seating



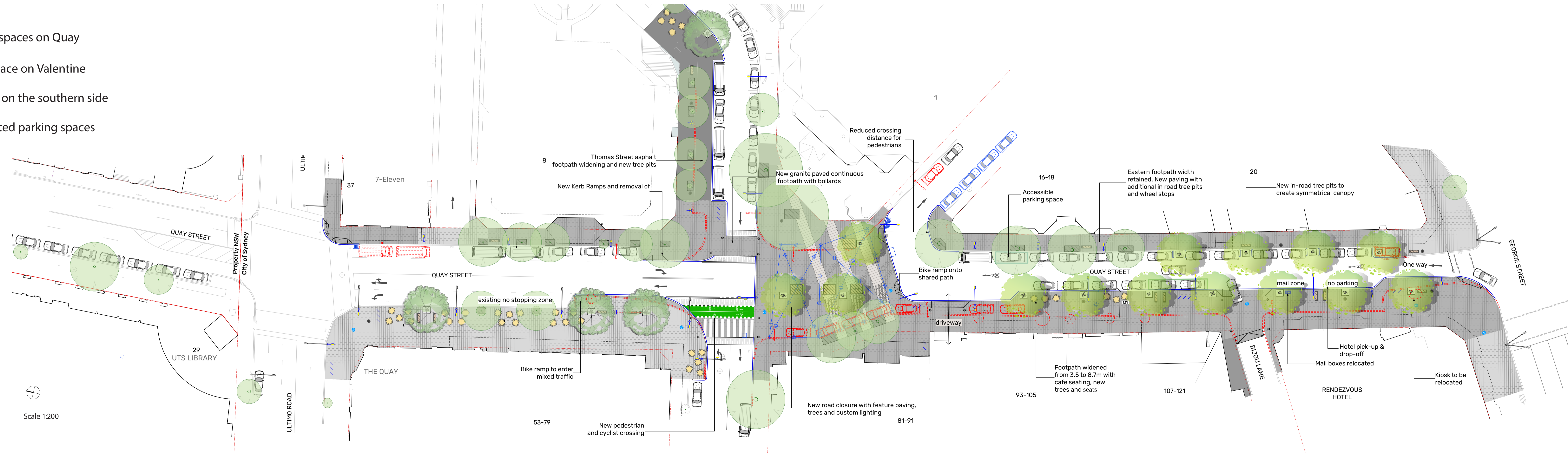
Cobblestone paving to encourage slow and safe riding

Traffic changes:

- New one-way loop George Street via Quay Street and Valentine Street
- Thomas Street road closure
- Removing the existing pedestrian crossing on Quay Street

Parking changes:

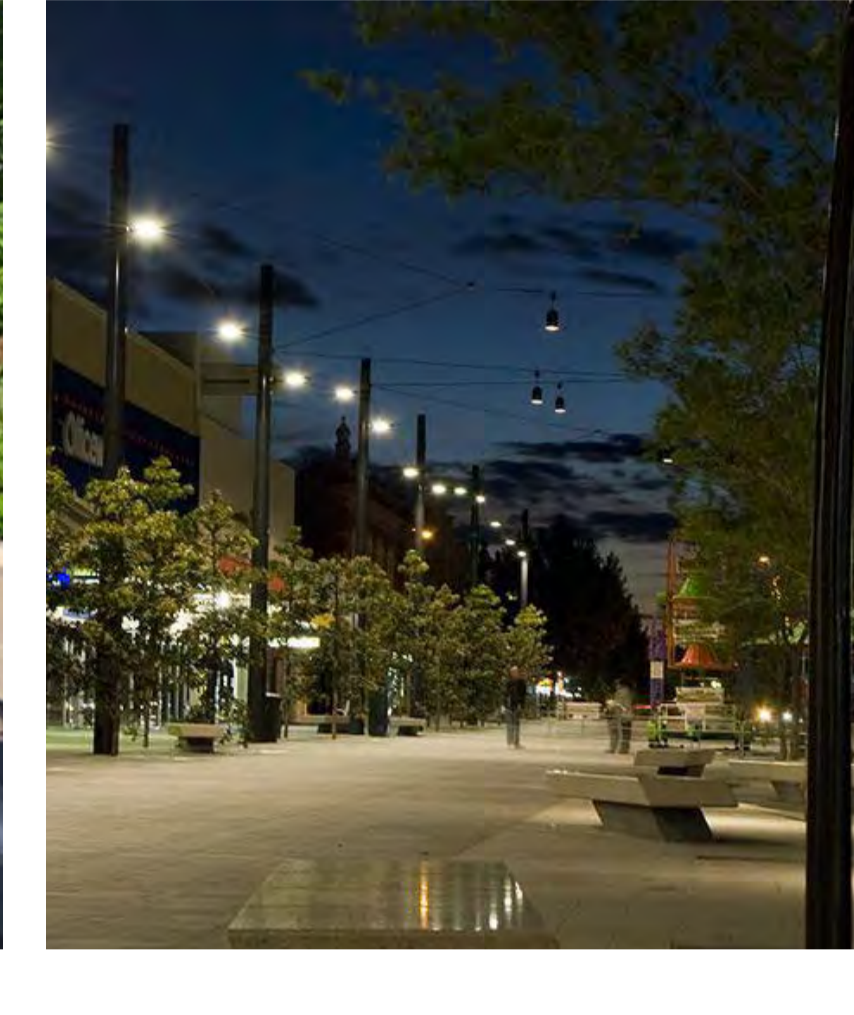
- All loading zones retained
- Removing seven ticketed parking spaces on Quay Street
- Removing one ticketed parking space on Valentine Street
- Four new ticketed parking spaces on the southern side of Valentine Street
- Total net parking loss of four ticketed parking spaces



Seating platforms in Darling Quarter



pedestrian crossing with adjacent bike crossing



catenary lighting



catenary lighting and outdoor dining