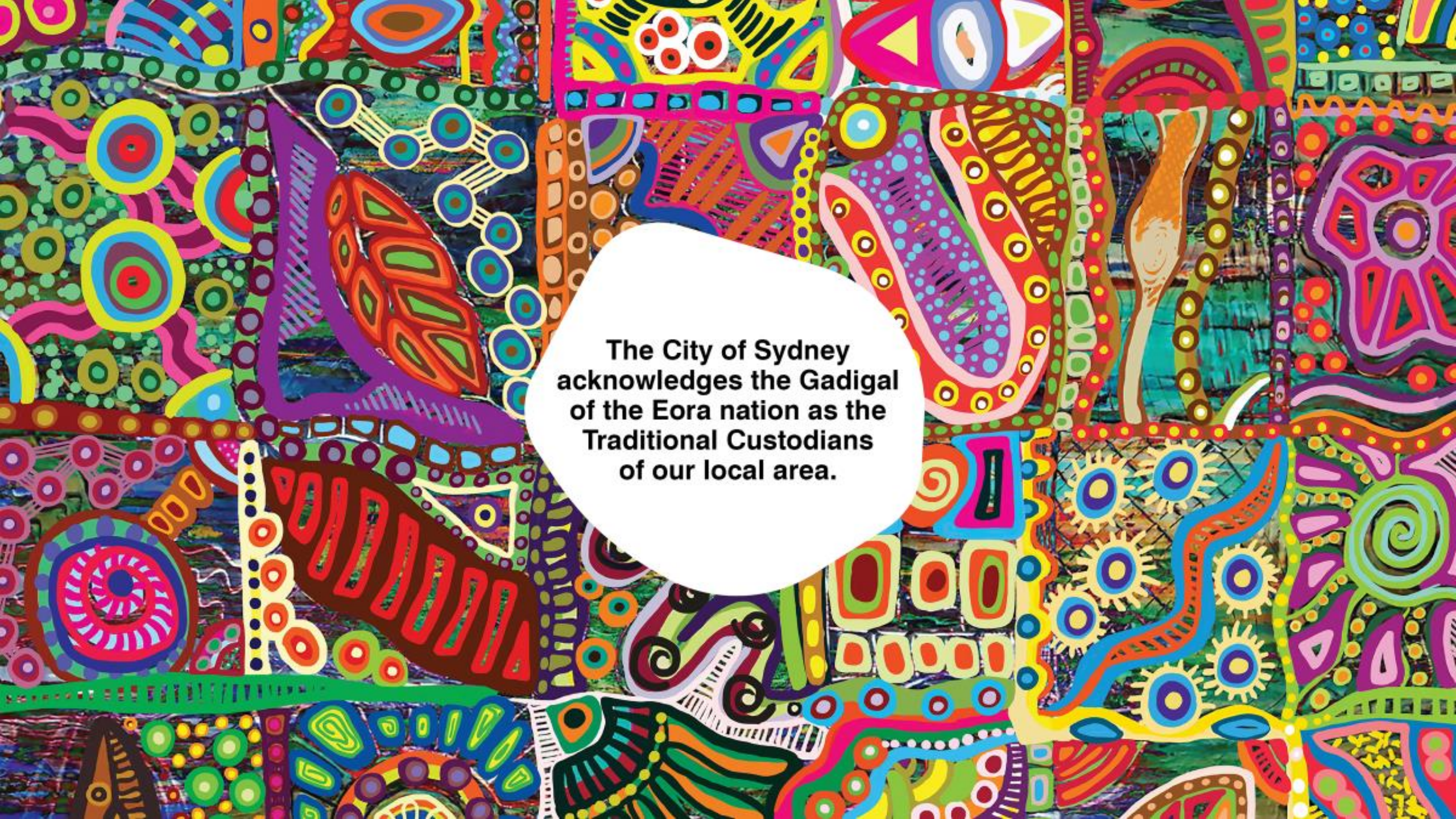


Visual Story

Sydney Christmas Concerts





**The City of Sydney
acknowledges the Gadigal
of the Eora nation as the
Traditional Custodians
of our local area.**

Visual Story

This is a visual story for the Sydney Christmas Concerts.

This Visual Story will tell you about the accessibility information available for the Sydney Christmas Concerts and will help you prepare for the environments and activities of each concert.

In this document you can find information about what to expect at each concert including dates, times and what activities there will be. You'll also find information about public transport and travel, crowds and what to bring.

More information about Sydney Christmas and access and inclusion can be found **insert name of page**

If you can't find the information you're looking for regarding access and inclusion, you can contact the Access and Inclusion Coordinator to christmasaccessinclusion@cityofsydney.nsw.gov.au

For any other questions you can call customer service at +61 2 9265 9333 or email council@cityofsydney.nsw.gov.au



Table of Contents

[Pirrama Park, Pyrmont...page 5](#)

[Getting There – Pirrama Park ...page 6](#)

[Accessibility Information – Pirrama Park...page 7](#)

[Prince Alfred Park, Surry Hills ...page 8](#)

[Getting There – Prince Alfred Park...page 9](#)

[Accessibility Information – Prince Alfred Park...page 10](#)

[Turruwul Park, Rosebery...page 11](#)

[Getting There – Turruwul Park...page 12](#)

[Accessibility Information – Turruwul Park...page 13](#)

[Rushcutters Bay Reg Bartley Oval...page 14](#)

[Getting There – Reg Bartley Oval...page 15](#)

[Accessibility Information – Reg Bartley Oval...page 16](#)

[Glebe Bicentennial Park...page 17](#)

[Getting There – Bicentennial Park...page 18](#)

[Accessibility Information – Bicentennial Park...page 19](#)

[Alexandria, Alexandria Park...page 20](#)

[Getting There – Alexandria Park...page 21](#)

[Accessibility Information – Alexandria Park...page 22](#)

merry
christmas



CITY OF SYDNEY 

Pirrama Park, Pyrmont

Saturday 30th
November
6pm- 8pm

The main concert will be hosted by **Jayden Rodrigues** with performances from the 'Diver City', 'Whistle & Trick', 'Soulfood Chorus', 'La Fiesta Sound System' and a visit from Santa!

There will be lots of other fun activities to enjoy. They include posting a letter to Santa, Santa photos, giant Jenga, table tennis and connect four and kids crafts!

If you're wanting something to eat or a tasty snack, there'll be lots of tasty food. You'll be able to choose from **Messina Gelato, Sharon Kwan Kitchen.**

A fundraising BBQ by Ultimo Public School P&C will be provided!

merry 
christmas

CITY OF SYDNEY 

Getting There Pirrama Park

There are multiple ways to get to Pirrama Park.

Light rail:

The John St Square stop on the L1 light rail is just a 5-minute walk to Pirrama Park.

Bus:

The 389 drops you off at Harris St & Bowman St, a short walk from the park.

Driving:

Paid parking is available at the Jones Bay Wharf carpark.

Street parking is limited but an accessible pick-up/drop-off is available via Pirrama Road.



Accessibility Information – Pirrama Park



A Sensory Tent



Accessible Pick-up/Drop-off



Live captioning near the stage



Accessible bathrooms



Trained staff



An accessible map

There is a continuous pathway around the park, however, as this concert is hosted in a park, most activities will be on grass and therefore may be more difficult for people with wheelchairs to access

Prince Alfred Park, Surry Hills

Sunday 1st
December
6pm- 8pm

The main concert will be hosted by Jayden Rodrigues with performances from the 'Diver City', 'Whistle & Trick', 'Soulfood Chorus', 'La Fiesta Sound System' and a visit from Santa!

There will be lots of other fun activities to enjoy. They include posting a letter to Santa, Santa photos, giant Jenga, table tennis and connect four and kids crafts!

If you're wanting something to eat or a tasty snack, there'll be lots of tasty food. You'll be able to choose from **Messina Gelato, Sharon Kwan Kitchen, Souvlaki Wraps, Volkswurst, Crazy Potato and Bar Coco-Churros**

merry
christmas



CITY OF SYDNEY 

Getting There Prince Alfred Park

There are multiple ways to get to Pirrama Park.

Train/Metro:

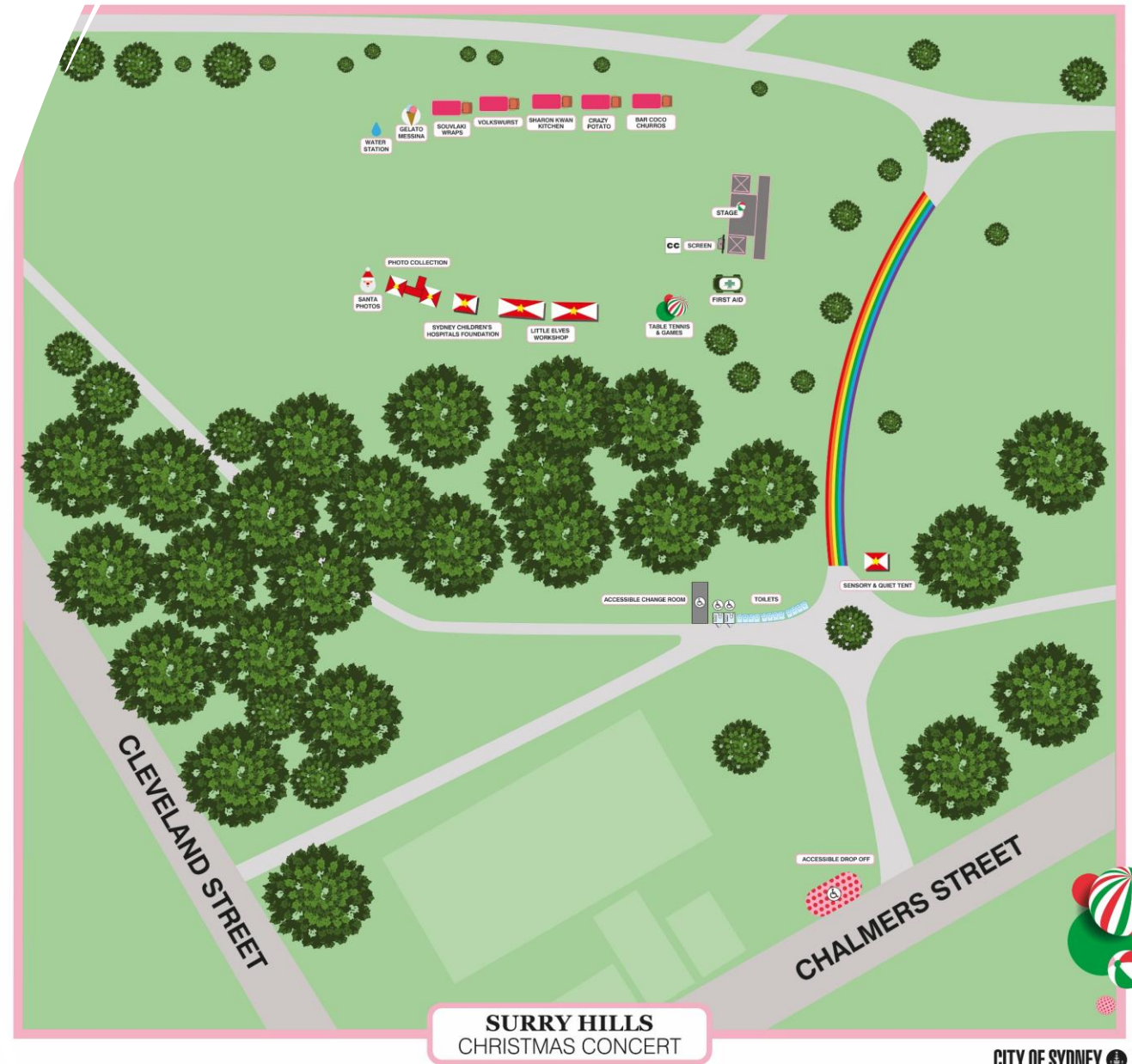
Central Station is a short walk to Prince Alfred Park.

Bus:

There are multiple buses that go to Prince Alfred Park. For information about your specific route, visit transport.nsw.gov.au or use the Transport App.

Driving:

Street parking is limited but an accessible pick-up/drop-off is available via



Accessibility Information – Prince Alfred Park



A Sensory/Quiet
Tent



Accessible Pick-
up/Drop-off



Live captioning
near the stage



Accessible
bathrooms



Trained staff



An accessible
map



Accessible
Change Room

There is a continuous pathway around the park, however, as this concert is hosted in a park, most activities will be on grass and therefore may be more difficult for people with wheelchairs to access

Turruwul Park, Rosebery

Saturday 7th
December
6pm- 8pm

The main event is the concert on the mainstage and will be hosted by Justine Clarke with entertainment from 'Zindzi & the Zillionaires', 'The Tiptoe Giants', 'Soulfood Chorus', 'Limited Edition' and a visit from Santa!

There will be lots of other fun activities to enjoy. They include posting a letter to Santa, Santa photos, giant Jenga, table tennis and connect four and kids crafts!

If you're wanting something to eat or a tasty snack, there'll be lots of tasty food. You'll be able to choose from **Messina Gelato, Sharon Kwan Kitchen, Crazy Potato, Yia Yia's Honey Balls.**

A fundraising BBQ by Gardeners Road Public School P&C will be provided!

Getting There Turruwul Park

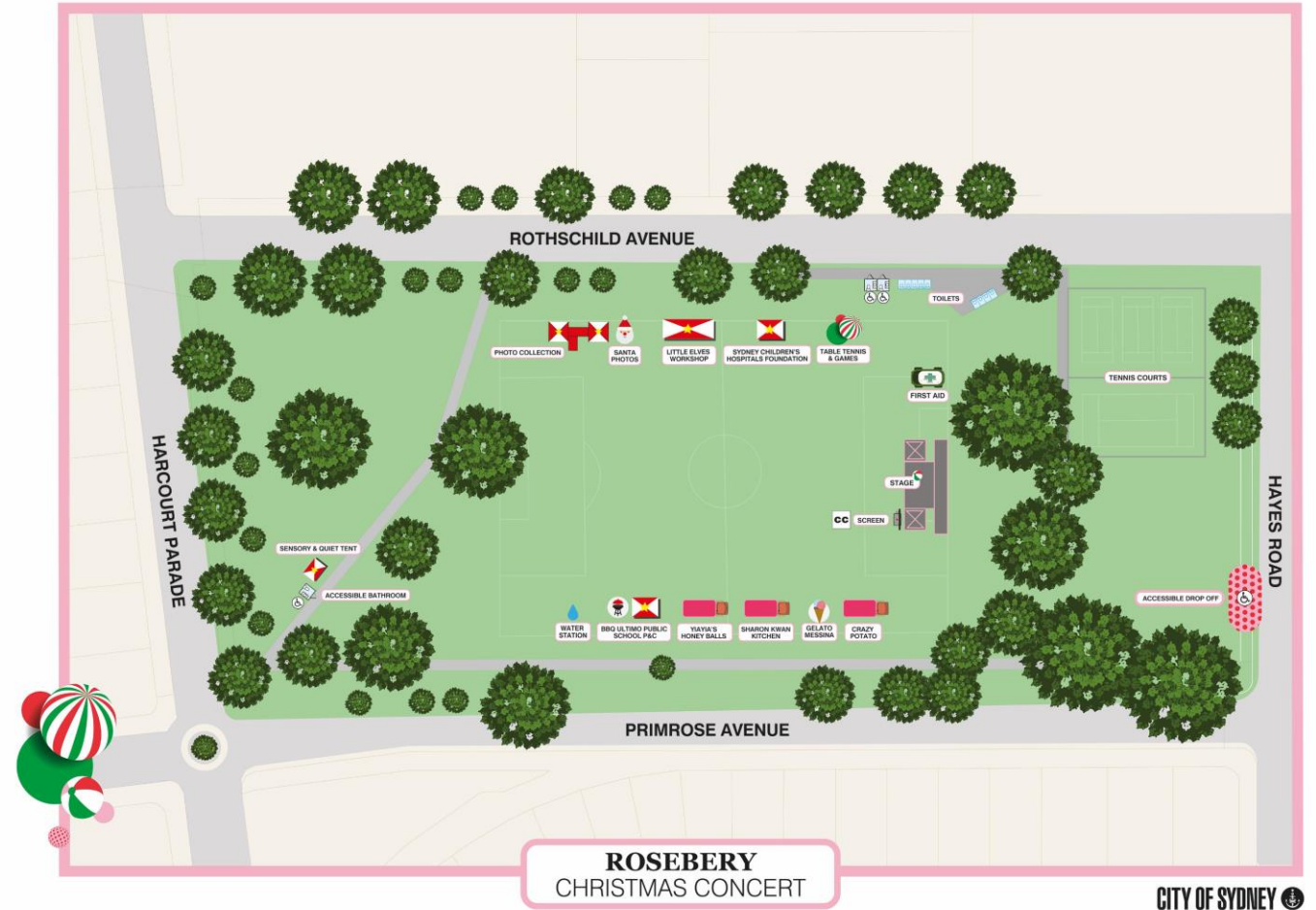
There are multiple ways to get to Turruwul Park.

Bus:

The closest bus stop is Turruwul Park via the 343 bus.

Driving:

Street parking is available with an accessible pick-up/drop-off via Hays Road.



Accessibility Information – Turruwul Park



A Sensory/Quiet
Tent



Accessible Pick-
up/Drop-off



Live captioning
near the stage



Accessible
bathrooms



Trained staff



An accessible
map

There is a continuous pathway around the park, however, as this concert is hosted in a park, most activities will be on grass and therefore may be more difficult for people with wheelchairs to access

Rushcutters Bay Reg Bartley Oval

Sunday 8th
December
6pm- 8pm

The main event is the concert on the mainstage and will be hosted by **Justine Clarke** along with entertainment from **Zindzi & the Zillionaires, The Quakkas, The Beanies, Brown Sugar** and a visit from **Santa**.

There will be lots of other fun activities to enjoy. They include posting a letter to Santa, Santa photos, giant Jenga, table tennis and connect four and kids crafts!

If you're wanting something to eat or a tasty snack, there'll be lots of tasty food. You'll be able to choose from **Messina Gelato, Sharon Kwan Kitchen, Souvlaki Wraps, Bar Coco Churros**.

A fundraising BBQ by Tennis World Group will be provided!

merry 
christmas

CITY OF SYDNEY 

Getting There Reg Bartley Oval

There are multiple ways to get to Pirrama Park.

Train:

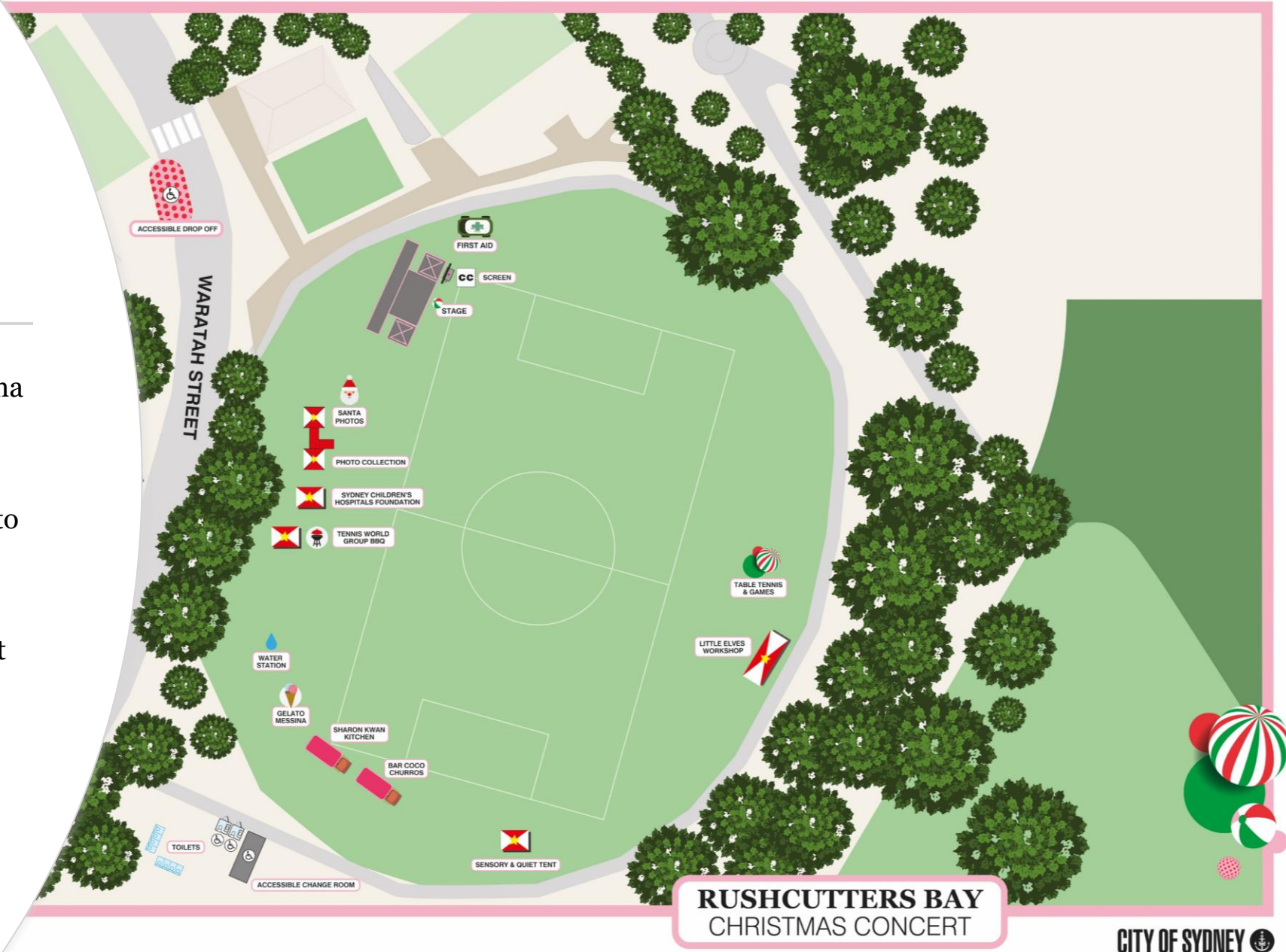
Kings Cross station is a moderate walk to

Bus:

The 324 and the 325 drop off at Bayswater Rd & McLachlan Ave, a short walk to the oval.

Driving:

Street parking is limited but an accessible pick-up/drop-off is available via Waratah St.



RUSHCUTTERS BAY
CHRISTMAS CONCERT

Accessibility Information – Reg Bartley Oval



A Sensory/Quiet
Tent



Accessible Pick-
up/Drop-off



Live captioning
near the stage



Accessible
bathrooms



Trained staff



An accessible
map



Accessible
Change Room

There is a continuous pathway around the park, however, as this concert is hosted in a park, most activities will be on grass and therefore may be more difficult for people with wheelchairs to access

Glebe Bicentennial Park

Saturday 14th
December
6pm- 8pm

The main event is the concert on the mainstage and will be hosted by **The Listies** along with entertainment from **The Beanies, Tiptoe Giants, Poppy Galactic & the Beat, Limited Edition** and a visit from **Santa!**

There will be lots of other fun activities to enjoy. They include posting a letter to Santa, Santa photos, giant Jenga, table tennis and connect four and kids crafts!

If you're feeling peckish, there'll be lots of tasty food available. You'll be able to choose from **Messina Gelato, Sharon Kwan Kitchen, Souvlaki Wraps, Crazy Potato, Yia Yia's Honey Balls**

A fundraising BBQ by Glebe Scouts will be provided!

merry
christmas



CITY OF SYDNEY 

Getting There Bicentennial Park

There are multiple ways to get to Bicentennial Park.

Light Rail:

The Jubilee Park stop on the L1 light rail is about a 5-minute walk to the park.

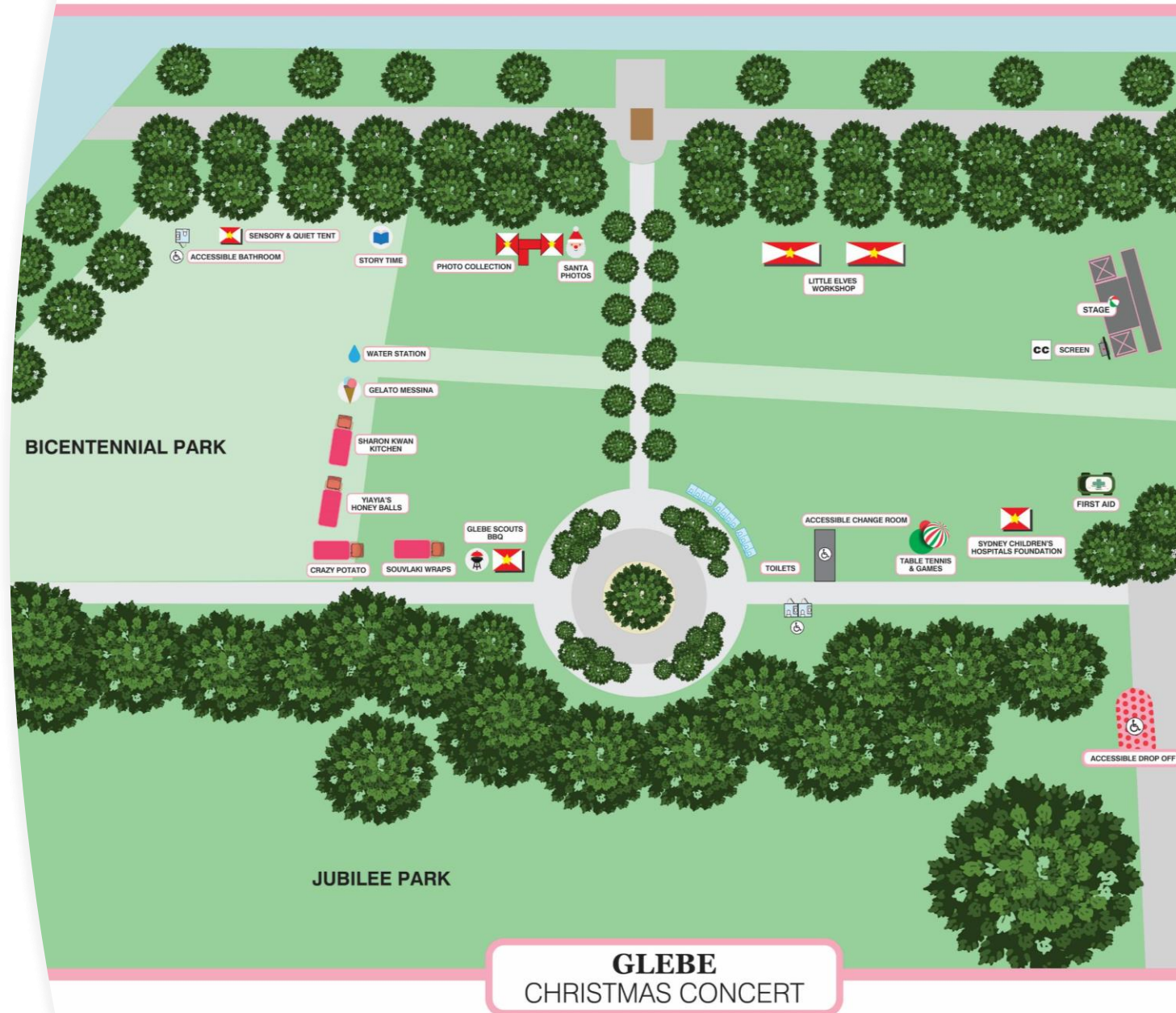
An accessible shuttle service will be available from the light rail to the park.

Bus:

The 370 & 431 drop off at Federal Rd & Bicentennial Park, a short distance from the park.

Driving:

Street parking is limited but an accessible pick-up/drop-off is available via Northcote Rd.



Accessibility Information – Bicentennial Park



A Sensory/Quiet
Tent



Accessible Pick-
up/Drop-off



Live captioning
near the stage



Accessible
bathrooms



Trained staff



An accessible
map

There is a continuous pathway around the park, however, as this concert is hosted in a park, most activities will be on grass and therefore may be more difficult for people with wheelchairs to access

Alexandria Alexandria Park

Sunday 15th
December
6pm- 8pm

The main event is the concert on the mainstage and will be hosted by **The Listies** along with entertainment from **The Sticker Club, Soulfood Chorus, Poppy Galactic & the Beat, Soul Empire** and a visit from **Santa!**

There will be lots of other fun activities to enjoy. They include posting a letter to Santa, Santa photos, giant Jenga, table tennis and connect four and kids crafts!

If you're feeling peckish, there'll be lots of tasty food available. You'll be able to choose from **Messina Gelato, Sharon Kwan Kitchen, Crazy Potato, Yia Yia's Honey Balls.**

A fundraising BBQ by Alexandria Rovers will be provided!

merry 
christmas

CITY OF SYDNEY 

Getting There – Alexandria Park

There are multiple ways to get to Alexandria Park.

Train/Metro:

Waterloo Metro is about a 5-minute walk to Alexandria Park or Redfern station is about a 10-minute walk.

Bus:

There are multiple buses that go through the area. For information about your specific route, visit transport NSW or use the Transport App.

Driving:

Street parking is limited but an accessible pick-up/drop-off is available via Buckland St.



Accessibility Information – Alexandria Park



A Sensory/Quiet
Tent



Accessible Pick-
up/Drop-off



Live captioning
near the stage



Accessible
bathrooms



Trained staff



An accessible
map



Accessible
Change Room

There is a continuous pathway around the park, however, as this concert is hosted in a park, most activities will be on grass and therefore may be more difficult for people with wheelchairs to access