

HYDE PARK

CLIENT

CITY OF SYDNEY
City of Sydney
Town Hall House
Level 2, 456 Kent Street
Sydney, NSW 2000 Australia
Telephone +61 9255 9333

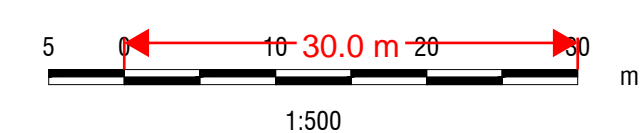
CONSULTANT

AECOM Australia Pty. Ltd.
A.B.N. 20 093 846 925
www.aecom.com

LEGEND:

DEPTH	DESCRIPTION
[Red Box]	HIGH-MEDIUM HISTORICAL ARCHAEOLOGICAL POTENTIAL
[Yellow Box]	LOW-MEDIUM ABORIGINAL ARCHAEOLOGICAL POTENTIAL
[Blue Box]	NEW PATHS
[Grey Box]	BUILDING BELOW
[White Box]	STATION BELOW
[Light Grey Box]	CROSS CITY TUNNEL BELOW
[Dark Grey Box]	TUNNEL BELOW
[Dashed Line]	COMMUNICATION LINE
[Red Line]	DNOTES UNDERGROUND HIGH VOLTAGE ELECTRICITY LINE LEVEL 16.29 QUALITY LEVEL B
[Blue Line]	DNOTES UNDERGROUND IRRIGATION QUALITY LEVEL D, (PLAN BY AUSFLOW IRRIGATION PTY. LTD. DWG NO. A282-IR2)
[Green Line]	DNOTES UNDERGROUND IRRIGATION DECODER CABLE QUALITY LEVEL D, (PLAN BY NEVER STOP IRRIGATION PTY. LTD. FILE NAME: NS265, DWG NO. 269-IR2)
[Yellow Line]	DNOTES UNDERGROUND SEWER - ONLY QUALITY LEVEL D DETECTION ACHIEVED

FOR CONTINUATION REFER TO DRAWING 60W78394-DIVEL-102



PROJECT MANAGEMENT INITIALS

DESIGNER	CHECKED	APPROVED

ISSUE/REVISION

NO.	DATE	DESCRIPTION

KEY PLAN

PROJECT NUMBER
60613074

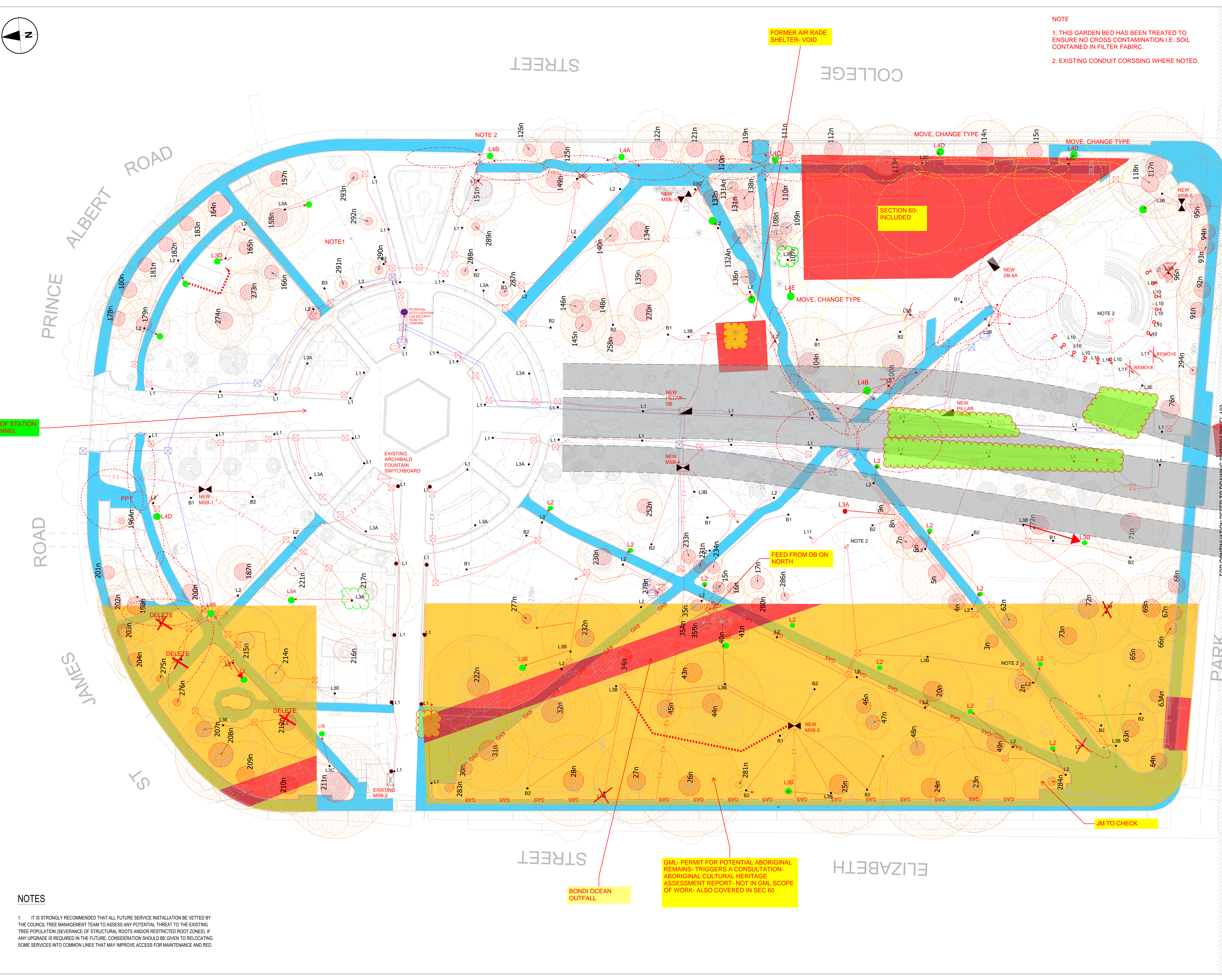
SHEET TITLE
NORTH PARK STAGE 1

COORDINATED SERVICES
NORTH PARK STAGE 1

SHEET NUMBER
60613074-DW-CS-101

NOTES

- IT IS STRONGLY RECOMMENDED THAT ALL FUTURE SERVICE INSTALLATION BE VETTED BY THE COUNCIL TREE MANAGEMENT TEAM TO ASSESS ANY POTENTIAL THREAT TO THE EXISTING TREE POPULATION (SEVERANCE OF STRUCTURAL ROOTS AND/OR RESTRICTED ROOT ZONES); IF ANY UPGRADE IS REQUIRED IN THE FUTURE, CONSIDERATION SHOULD BE GIVEN TO RELOCATING SOME SERVICES INTO COMMON LINES THAT MAY IMPROVE ACCESS FOR MAINTENANCE AND RED.



NOTE

- THIS GARDEN BED HAS BEEN TREATED TO ENSURE NO CROSS CONTAMINATION I.E. SOIL CONTAINED IN FILTER FABRIC.
- EXISTING CONDUIT CORSSING WHERE NOTED.

FORMER AIR RADE SHELTER - VOID

SECTION 60- INCLUDED

FEED FROM DB ON NORTH

BONDII OCEAN OUTFALL

GML- PERMIT FOR POTENTIAL ABORIGINAL REMAINS- TRIGGERS A CONSULTATION- ABORIGINAL CULTURAL HERITAGE ASSESSMENT REPORT- NOT IN GML SCOPE OF WORK- ALSO COVERED IN SEC 60

JM TO CHECK

EXISTING ARCHIBALD FOUNTAIN SWITCHBOARD

EXISTING MSB-2

NEW MSB-3

NEW MSB-4

NEW PILLAR DB

NEW PILLAR

NEW MSB-5

MOVE, CHANGE TYPE L4D

MOVE, CHANGE TYPE L4D

MOVE, CHANGE TYPE

MOVE, CHANGE TYPE

NOTE 2

NOTE 1

BOUND OF STATION AND TUNNEL

ALBERT ROAD

PRINCE

ROAD

JAMES

ST

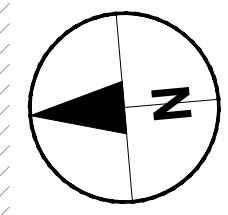
STREET

COLLEGE

STREET

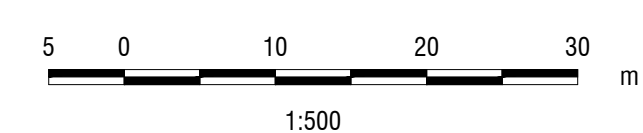
ELIZABETH

PARK



LEGEND:

	HIGH-MEDIUM HISTORICAL ARCHAEOLOGICAL POTENTIAL
	LOW-MEDIUM ABORIGINAL ARCHAEOLOGICAL POTENTIAL
	NEW PATHS
	BUILDING BELOW
	STATION BELOW
	CROSS CITY TUNNEL BELOW
	TUNNEL BELOW
	COMMUNICATION LINE
	DENOTES UNDERGROUND HIGH VOLTAGE ELECTRICITY LINE LEVEL 16.29 QUALITY LEVEL B
	DENOTES UNDERGROUND IRRIGATION QUALITY LEVEL D. (PLAN BY AUSFLOW IRRIGATION PTY. LTD. DWG NO. A282-IR2)
	DENOTES UNDERGROUND IRRIGATION DECODER CABLE QUALITY LEVEL D. (PLAN BY NEVER STOP IRRIGATION PTY. LTD. FILE NAME: NS265, DWG NO. 269-IR2)
	DENOTES UNDERGROUND SEWER - ONLY QUALITY LEVEL D DETECTION ACHIEVED



PROJECT MANAGEMENT INITIALS

DESIGNER	CHECKED	APPROVED

ISSUE/REVISION

NO.	DATE	DESCRIPTION

KEY PLAN

PROJECT NUMBER

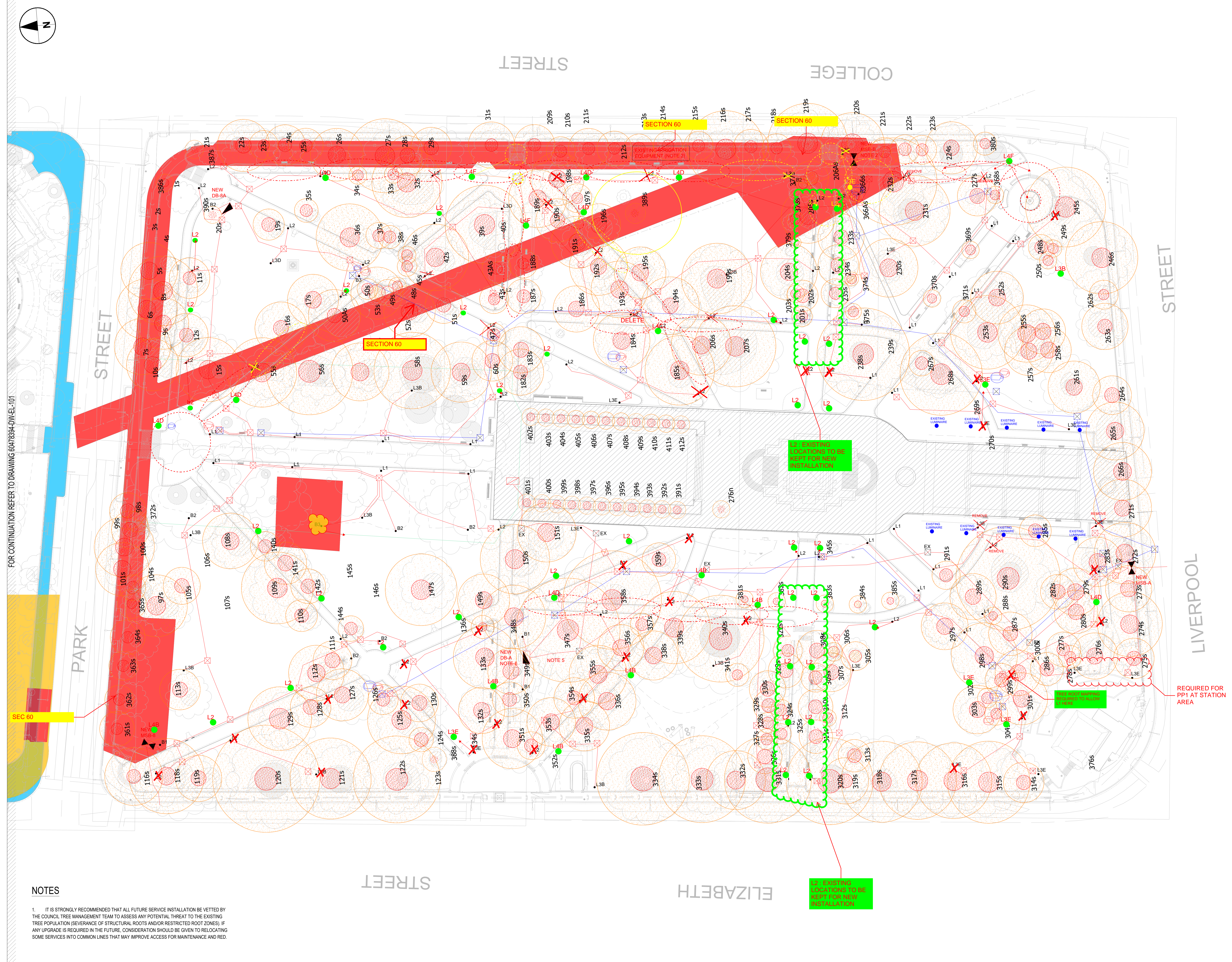
60613074

SHEET TITLE

COORDINATED SERVICES
SOUTH PARK STAGE 1

SHEET NUMBER

60613074-DW-CS-102



NOTES

- IT IS STRONGLY RECOMMENDED THAT ALL FUTURE SERVICE INSTALLATION BE VETTED BY THE COUNCIL TREE MANAGEMENT TEAM TO ASSESS ANY POTENTIAL THREAT TO THE EXISTING TREE POPULATION (SEVERANCE OF STRUCTURAL ROOTS AND/OR RESTRICTED ROOT ZONES); IF ANY UPGRADE IS REQUIRED IN THE FUTURE, CONSIDERATION SHOULD BE GIVEN TO RELOCATING SOME SERVICES INTO COMMON LINES THAT MAY IMPROVE ACCESS FOR MAINTENANCE AND RED.

FOR CONTINUATION REFER TO DRAWING 60478394-DW-EL-101