

# Attachment A: Comparative analysis of density

The following is a simple example of the type of analysis that could be undertaken to usefully compare density across different cities.

The figures show that Sydney's density compares well in the inner areas (10 x 10 kilometres) but less well in the middle ring of suburbs (30 x 30 kilometre). Sydney's density pattern, like many others, is heavily influenced by its rail network. The denser cities have denser rail networks with a greater number of stations.

The graphs on the right-hand side of each page analyses the inner 10 x 10 kilometre scale. The median density square indicated by a red dot, with the number of rail stations arranged underneath. This allows for an easier visual comparison between the inner areas of each city

Finally, a summary graph is derived from the 10 x 10 kilometre inner areas of each city arranged vertically in relation to the number of rail stations. Each inner city area is represented by a line that ranges from the 25<sup>th</sup> to 75<sup>th</sup> percentile density square with the median density marked by a dot.

The summary graph reveals that that the inner area of Sydney has fewer rail stations than Melbourne and even Brisbane. The strong correlation between the number of rail stations and the density of cities is the dominant feature of the graph.

Inner Sydney's median density is in the upper half of the sample and only those cities with considerably more rail stations have noticeably more density. The comparative study shows that to markedly increase Sydney's density more rail stations are essential.

This is a quick exercise, undertaken in-house by the City of Sydney and based on easily available data. Comparison of a greater number of cities and further analysis would reveal other factors of interest for housing policy development. Selective use of density data, comparing cities at different scales with only a small number of cities compared is of limited value.

---

## Notes on the methodology

### **For the cities**

Cities are selected from those noted in the Productivity Commissions report *Building more homes where people want to live*. Perth, Canberra, Adelaide, Auckland and Wellington are excluded and are known to be significantly less dense than inner Sydney. Dublin, Geneva, Luxembourg, Montreal and Stockholm are not included as data for an earlier exercise in the city's submission to the low and mid rise housing explanation of intended effects was not easily available.

### **For the figures**

- The figure comparisons are on a one kilometre grid scale across constant geographic areas for each city.

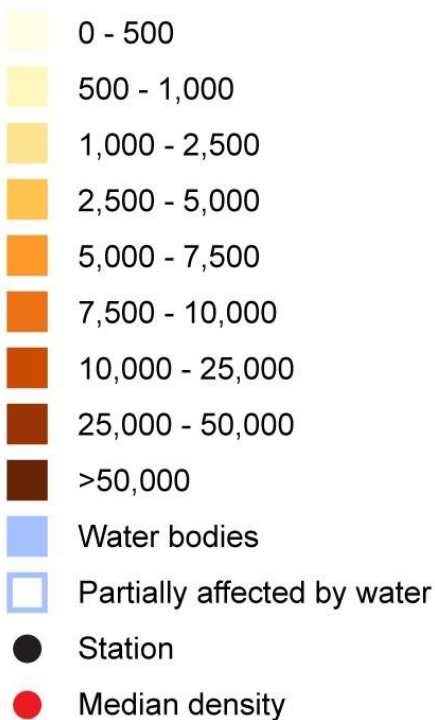
- Each city is compared at the scale of the inner 10 x 10 kilometres, 30 x 30 kilometres, and 60 x 60 kilometres.
- The density calculation of the grid squares include the unoccupied water areas. The seemingly lower densities at the waters edge would be corrected by weighting to exclude the water areas.

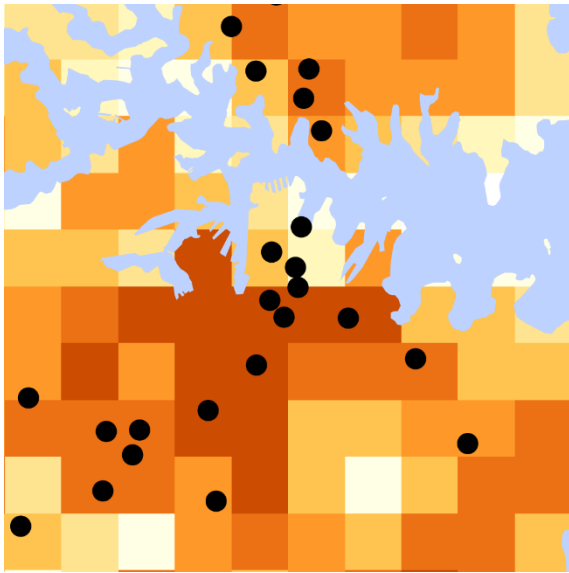
### For the graphs

- The number of square kilometres in each density grade is grouped and
- Unoccupied water areas are represented by blue squares, and those squares that are partially occupied by water are indicated by a blue border, and while remaining in the density group shown on the maps, the colour of the next higher density group is applied to these squares to indicate that the weighted density [measured without the water area] would be higher

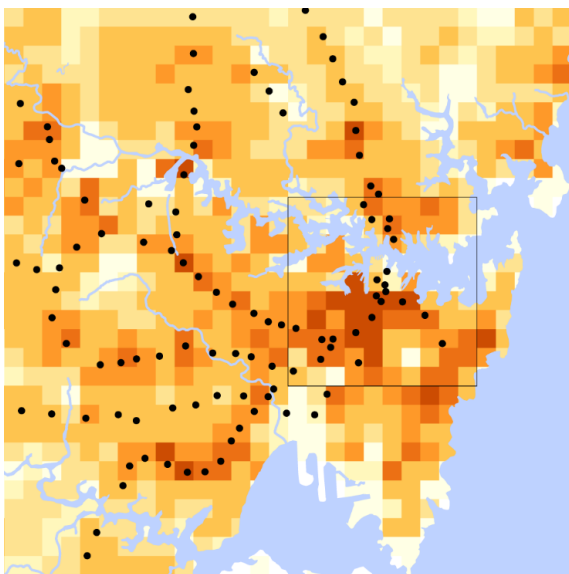
### Key for the density analysis

Population Density (ppl/Km<sup>2</sup>)

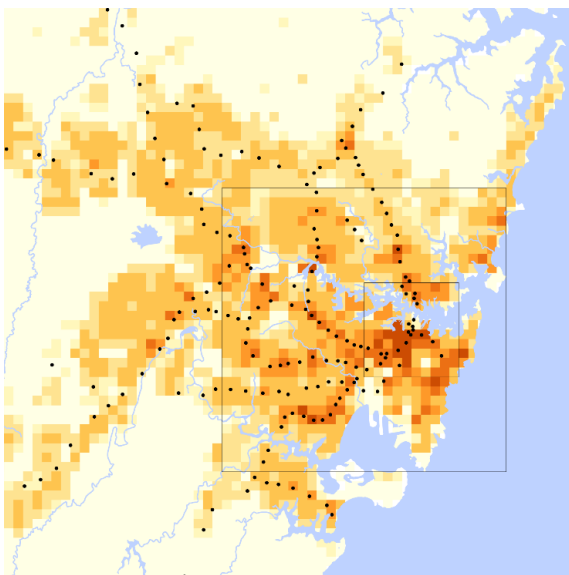




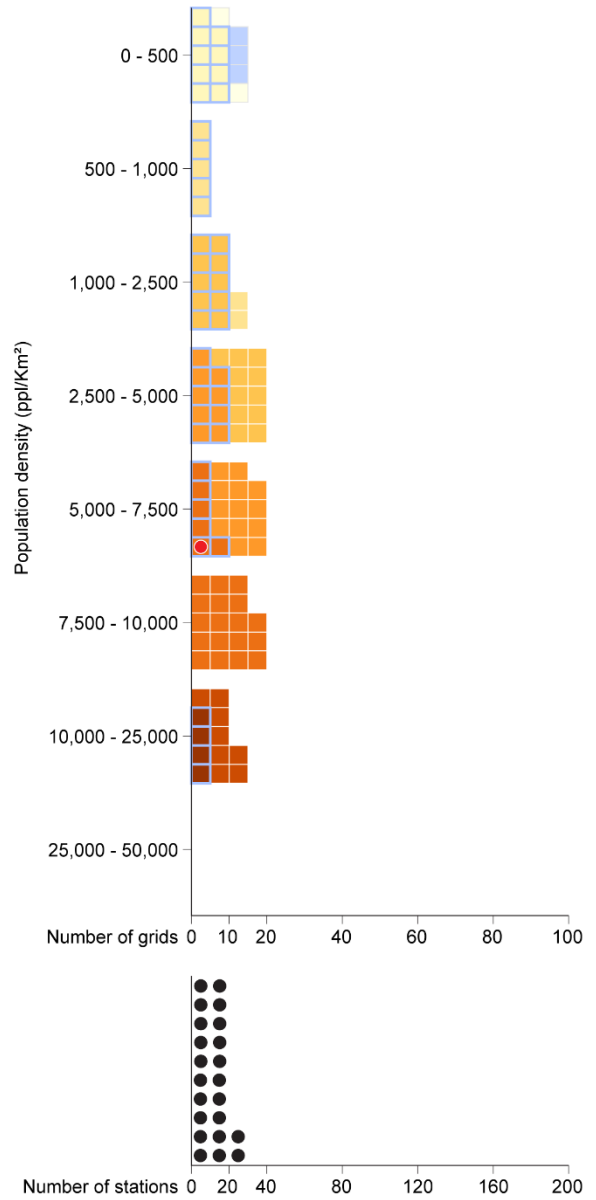
Sydney 10km x 10km

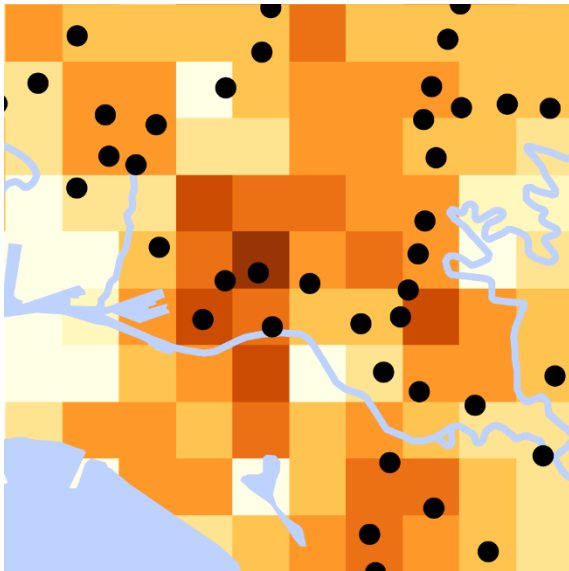


Sydney 30km x 30km

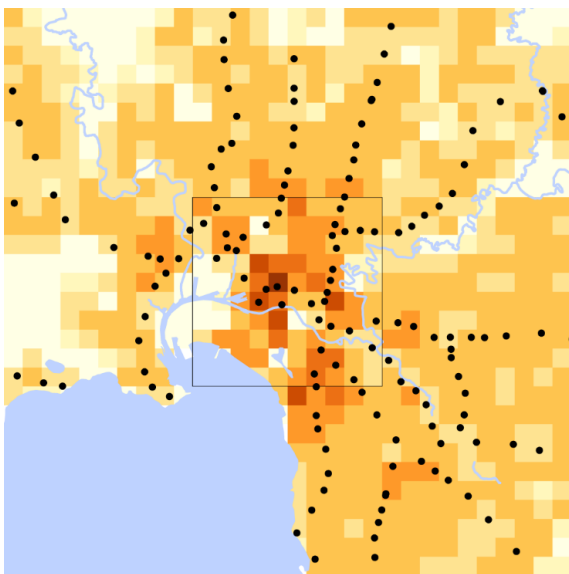


Sydney 60km x 60km

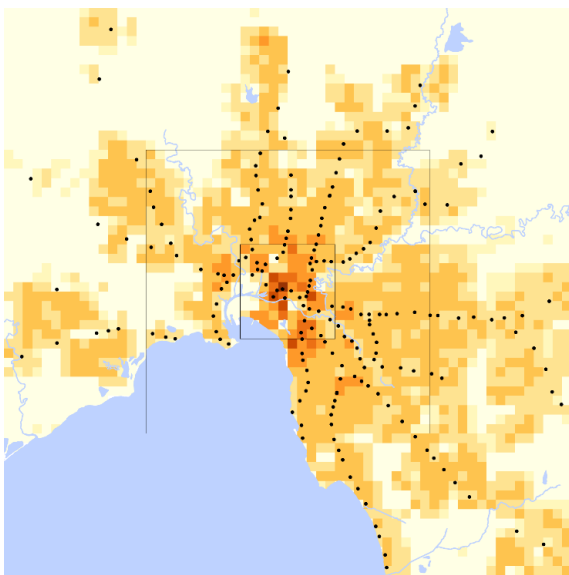




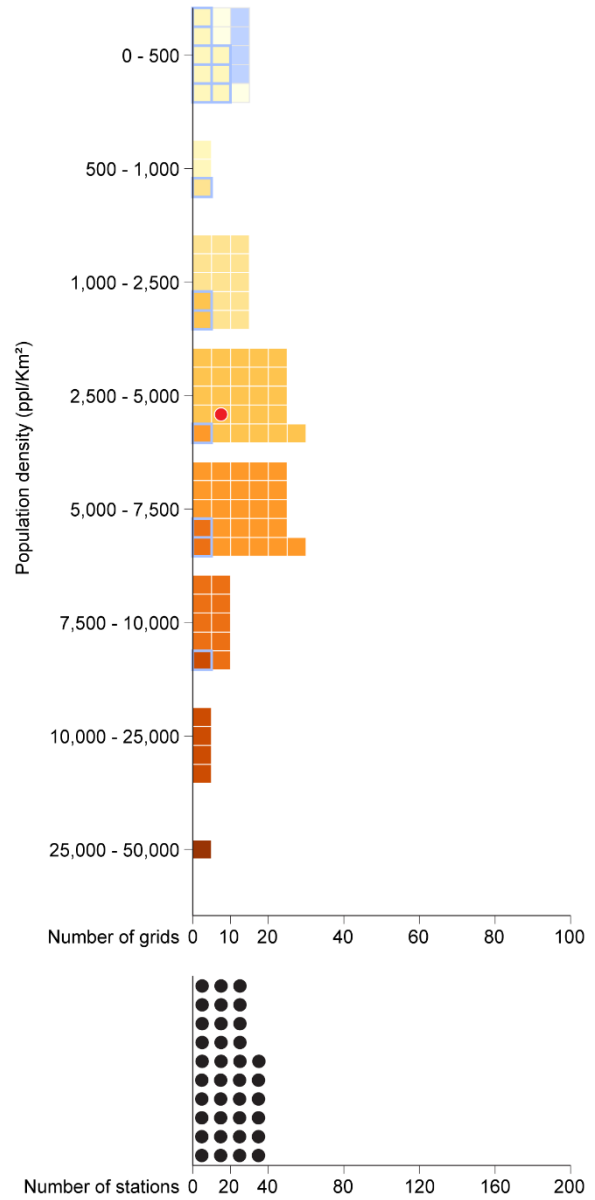
Melbourne 10km x 10km

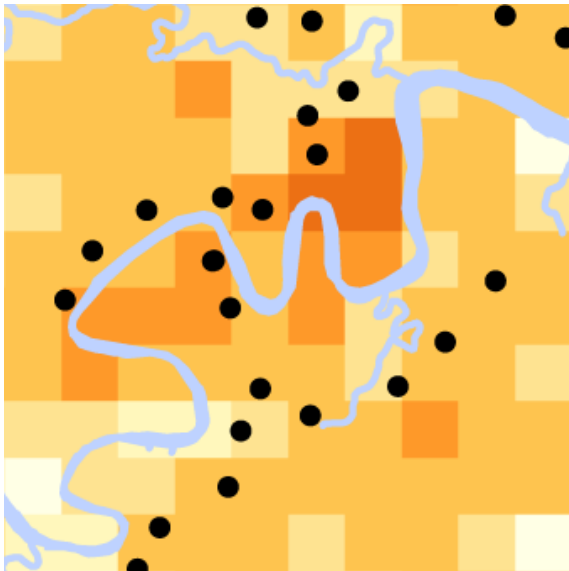


Melbourne 30km x 30km

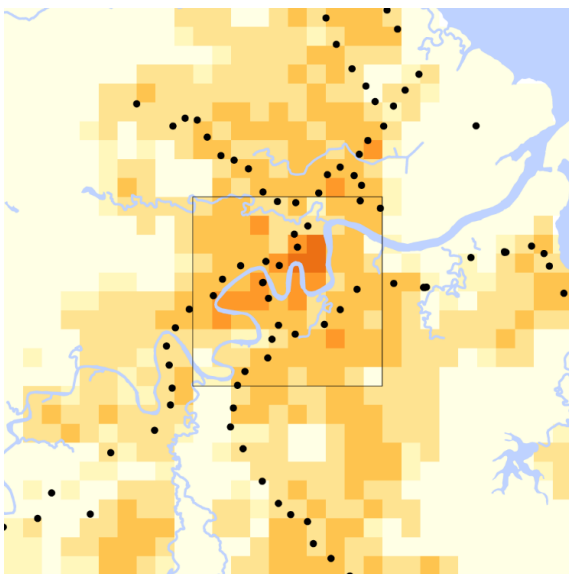


Melbourne 60km x 60km

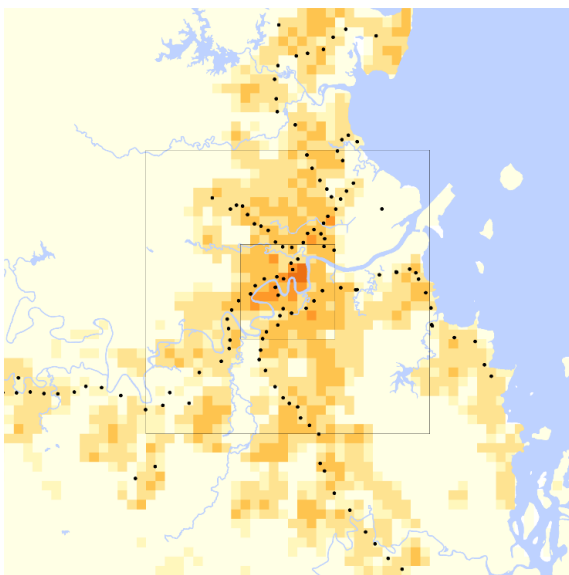




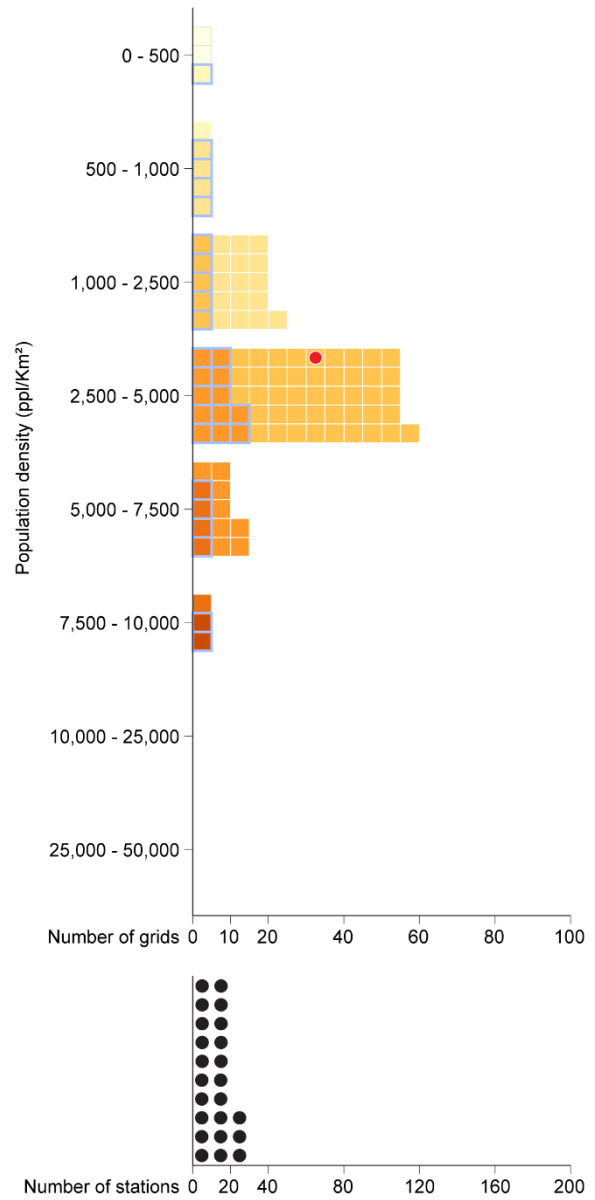
**Brisbane 10km x 10km**

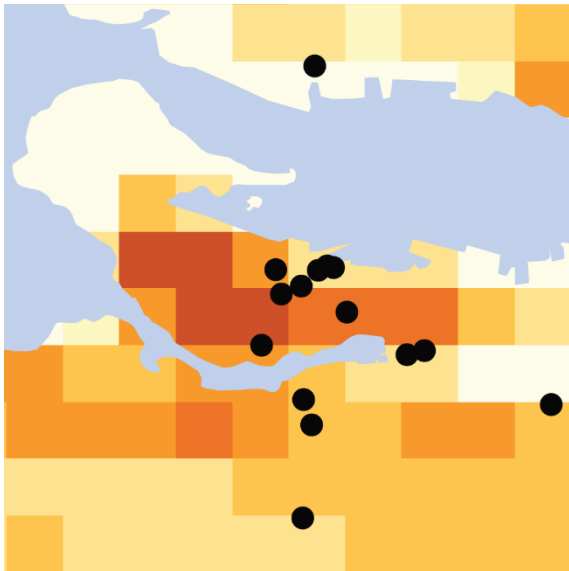


**Brisbane 30km x 30km**

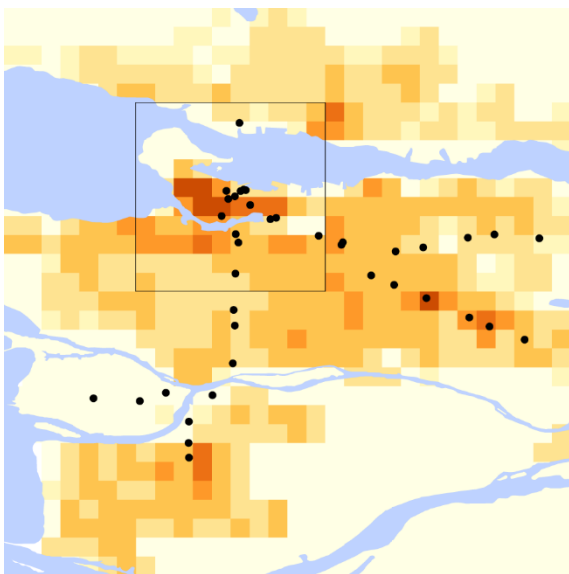


**Brisbane 60km x 60km**

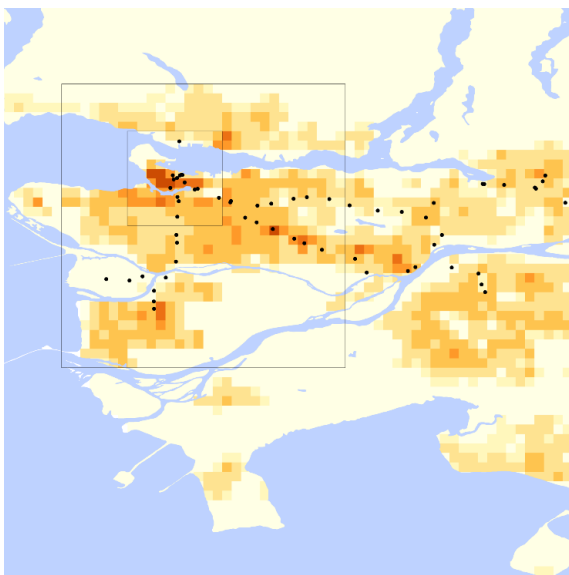




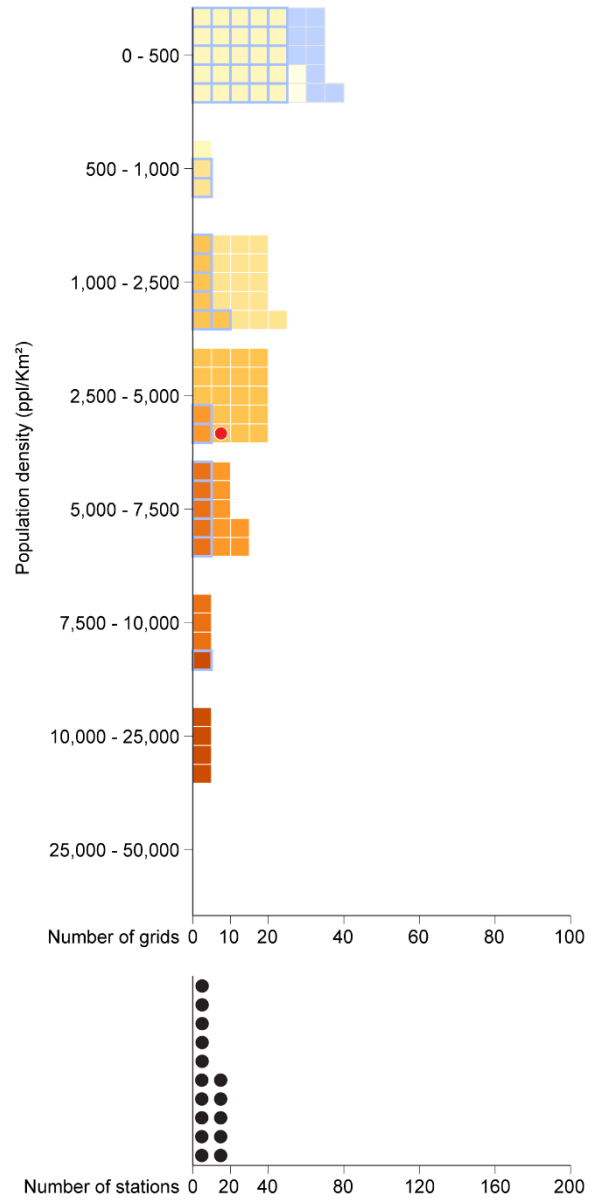
Vancouver 10km x 10km

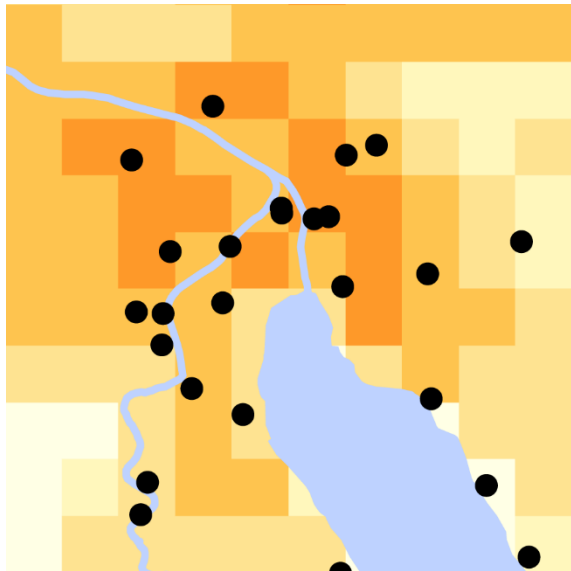


Vancouver 30km x 30km

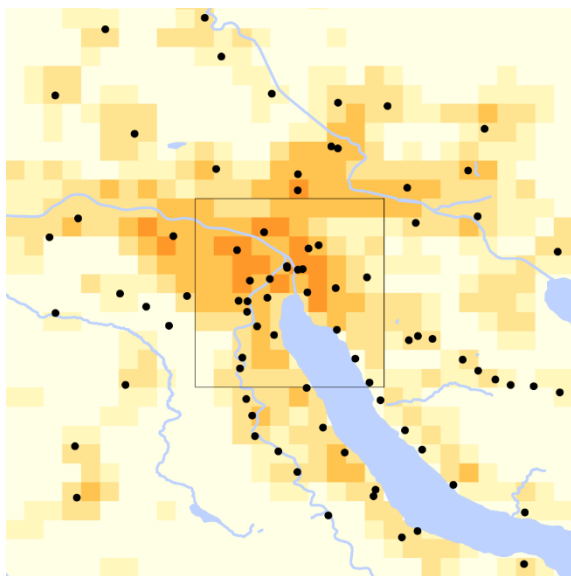


Vancouver 60km x 60km

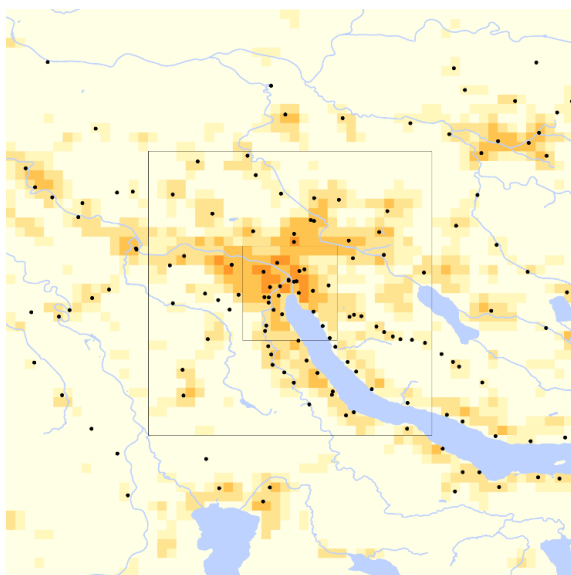




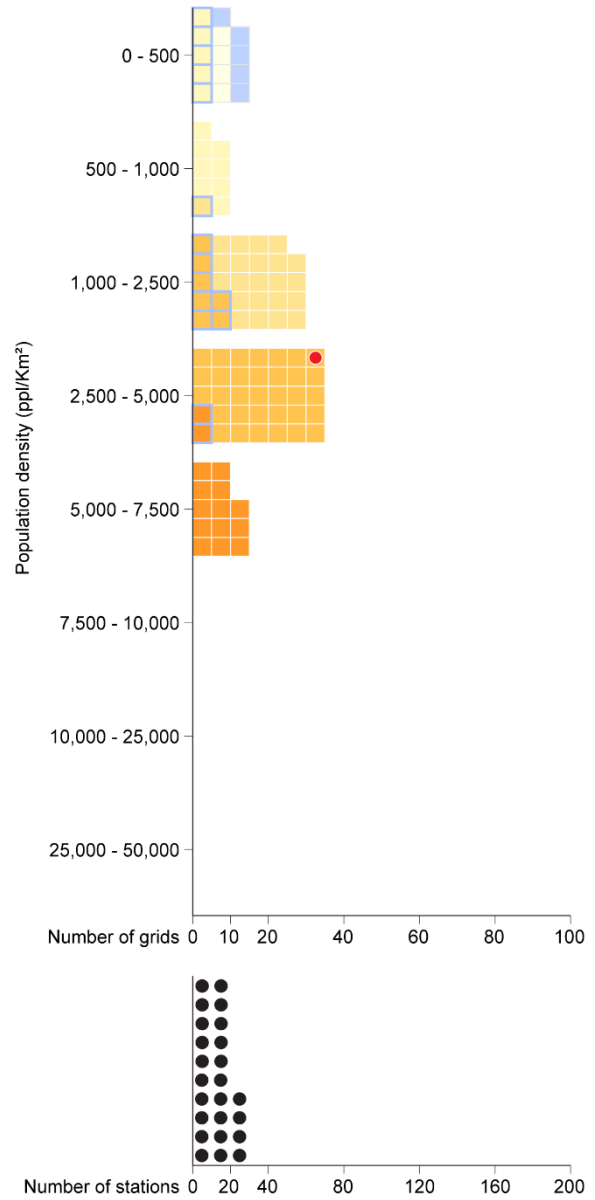
Zurich 10km x 10km

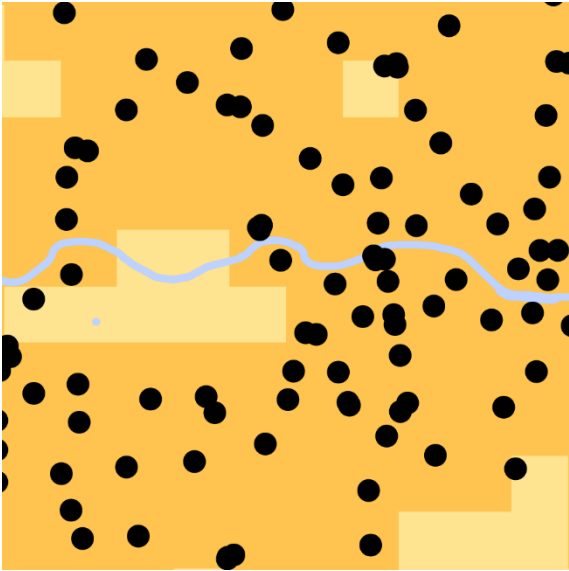


Zurich 30km x 30km

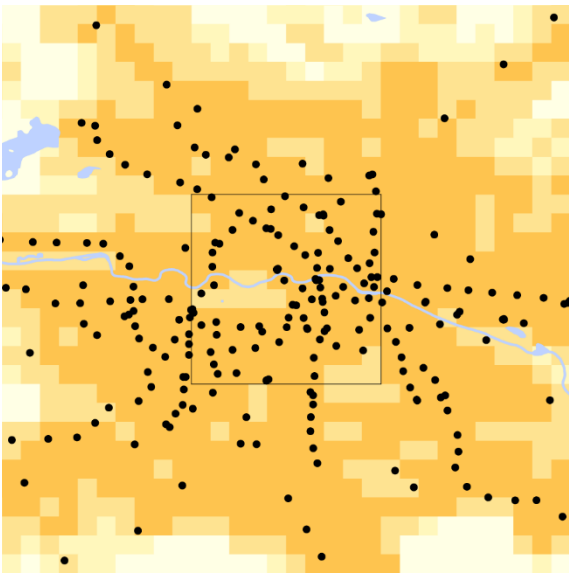


Zurich 60km x 60km

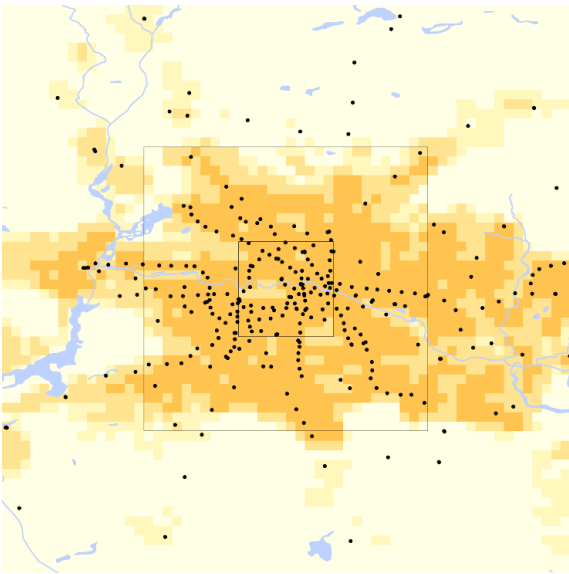




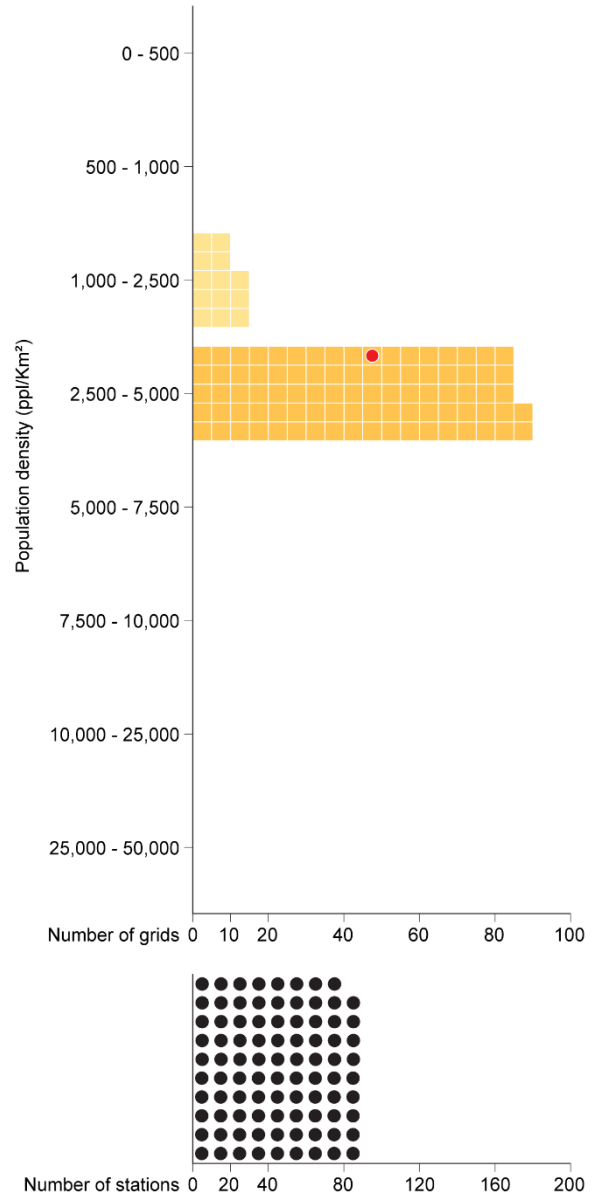
Berlin 10km x 10km



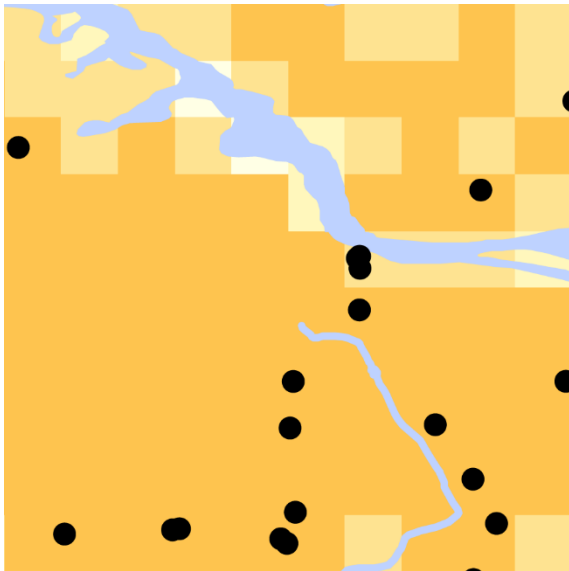
Berlin 30km x 30km



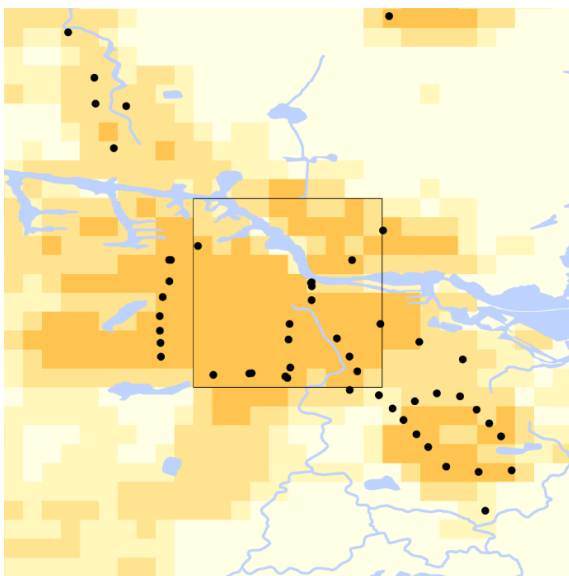
Berlin 60km x 60km



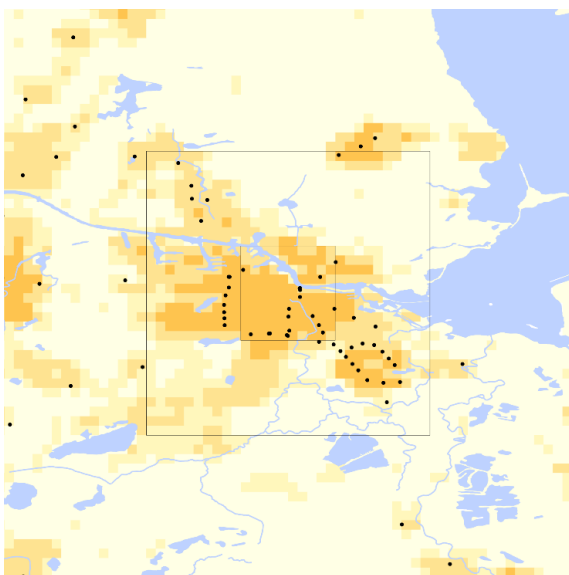




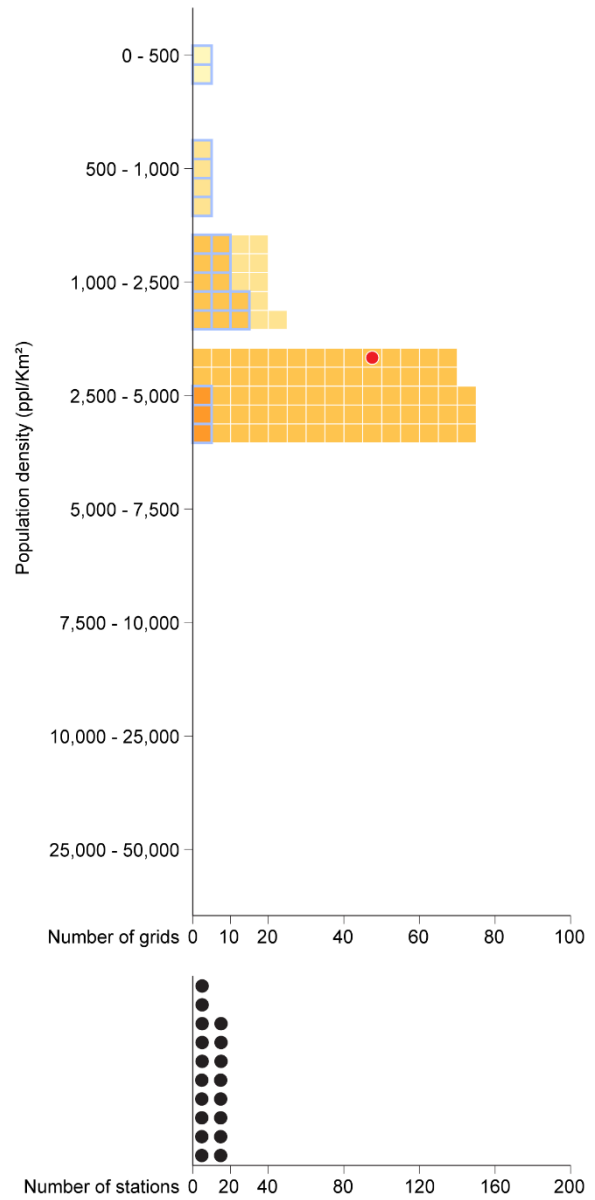
Amsterdam 10km x 10km

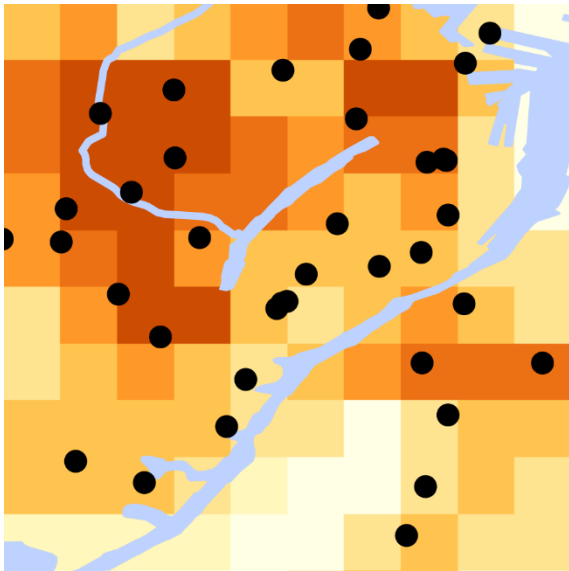


Amsterdam 30km x 30km

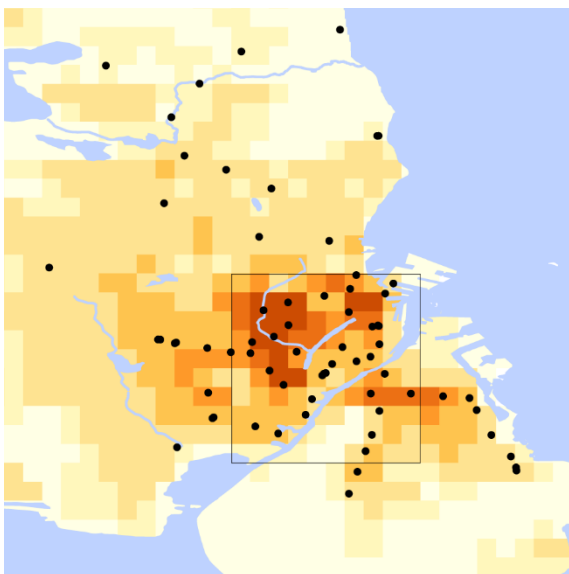


Amsterdam 60km x 60km

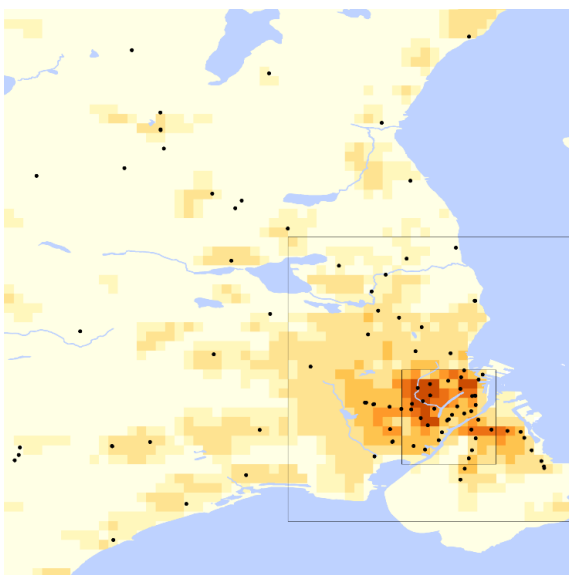




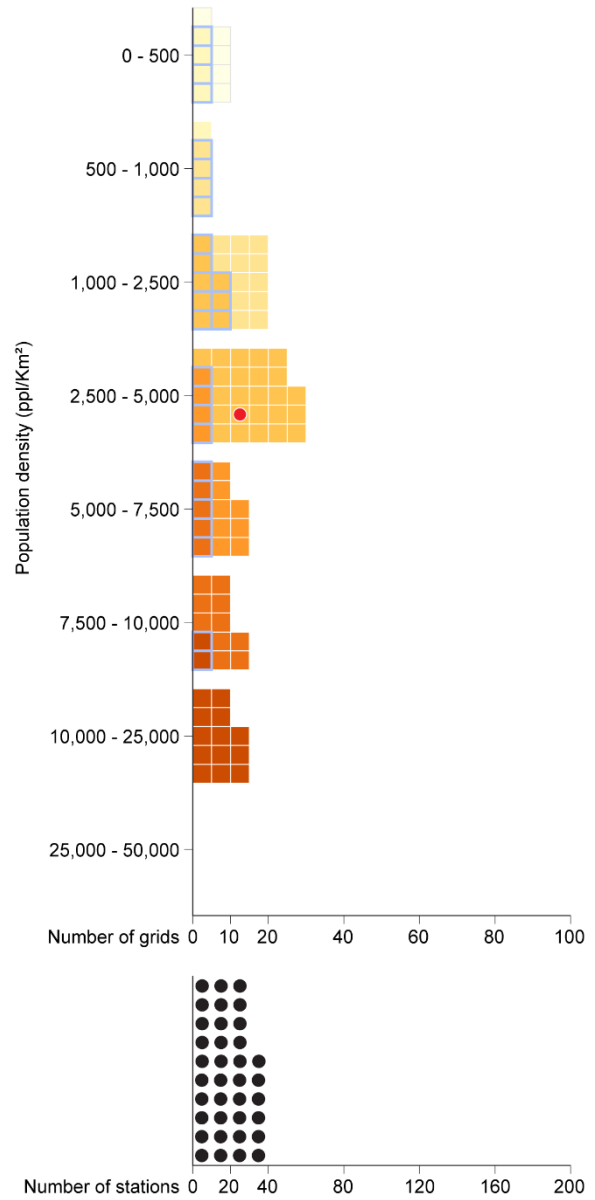
Copenhagen 10km x 10km

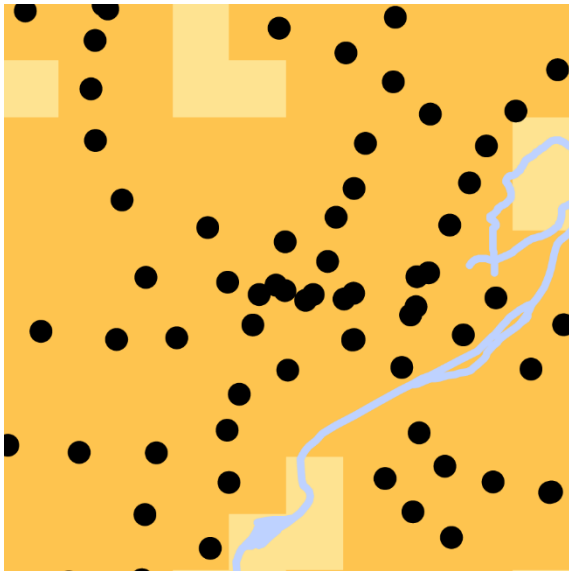


Copenhagen 30km x 30km

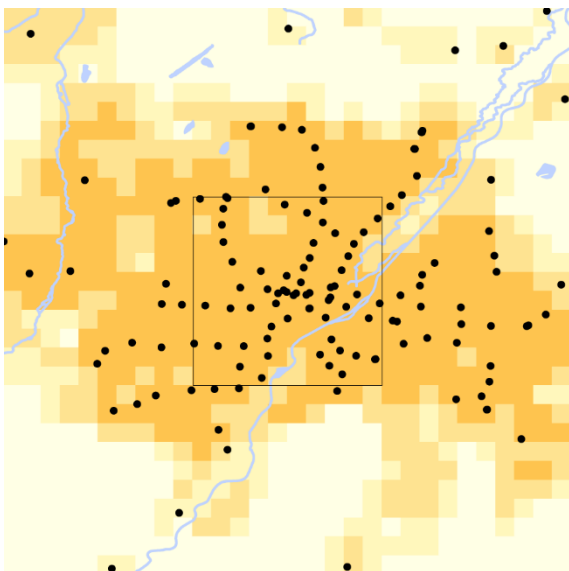


Copenhagen 60km x 60km

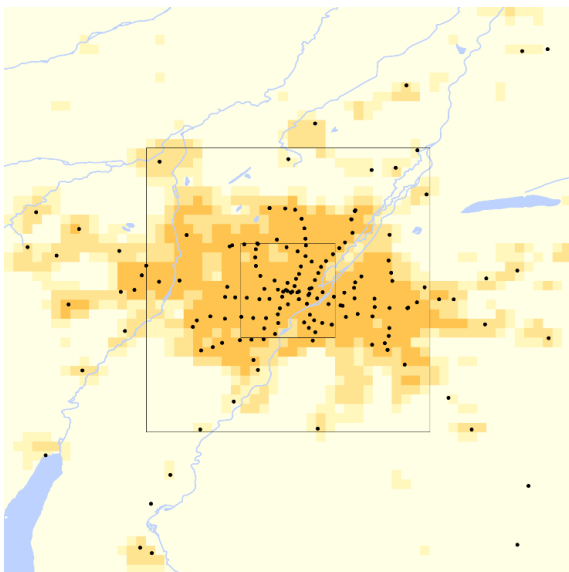




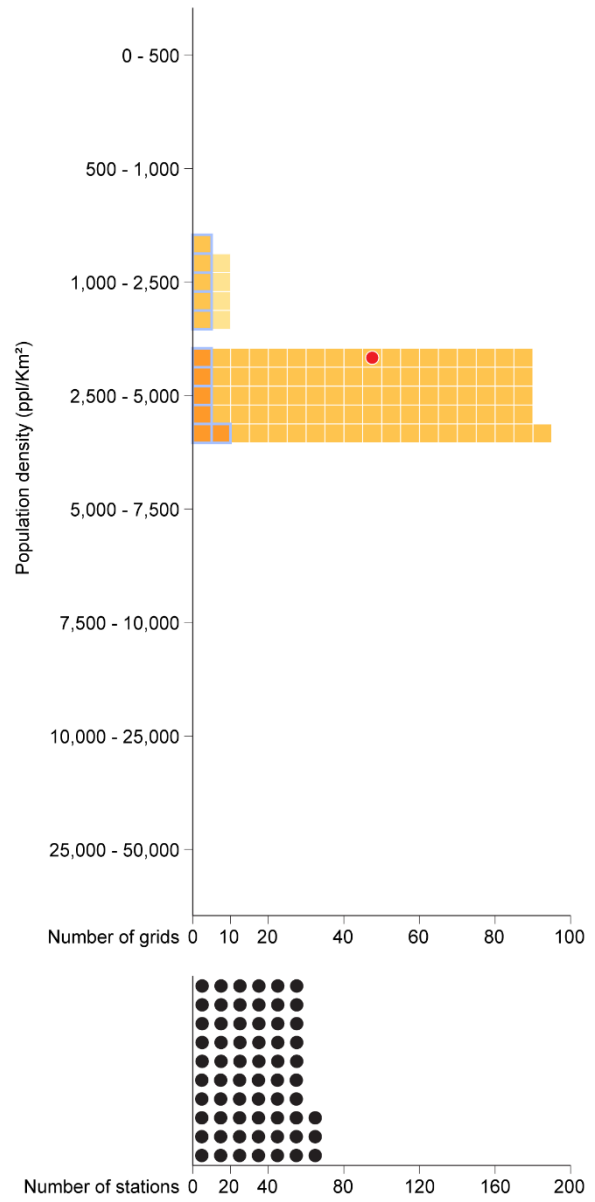
Munich 10km x 10km

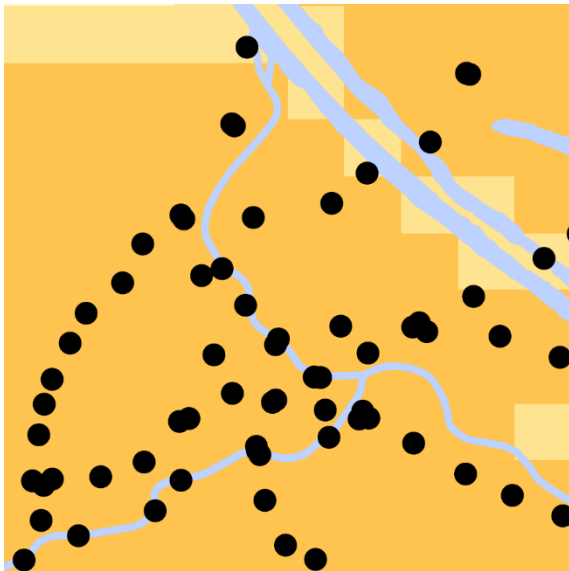


Munich 30km x 30km

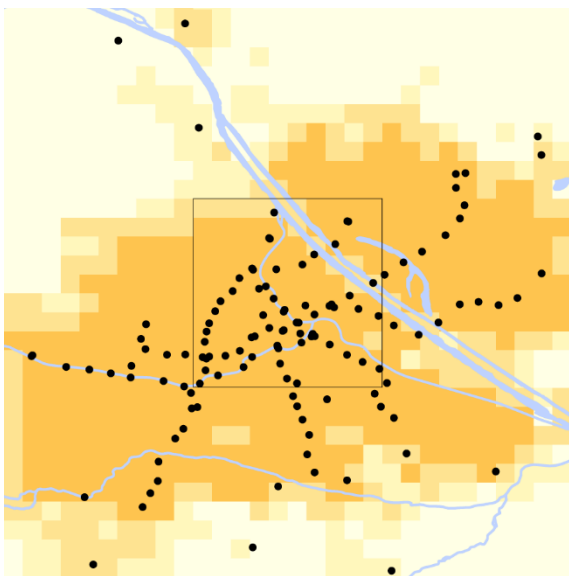


Munich 60km x 60km

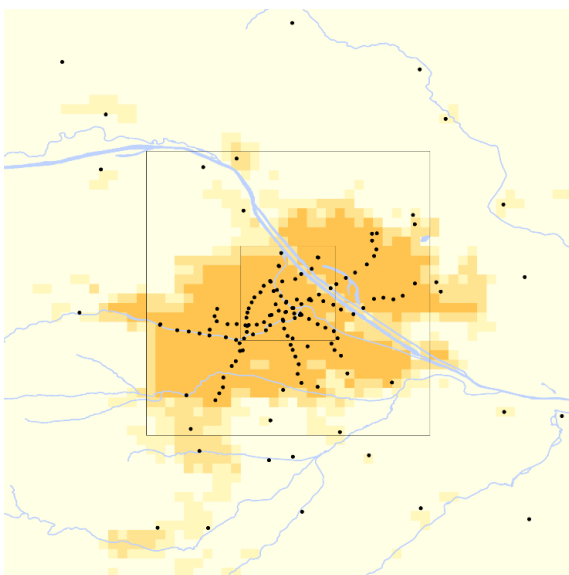




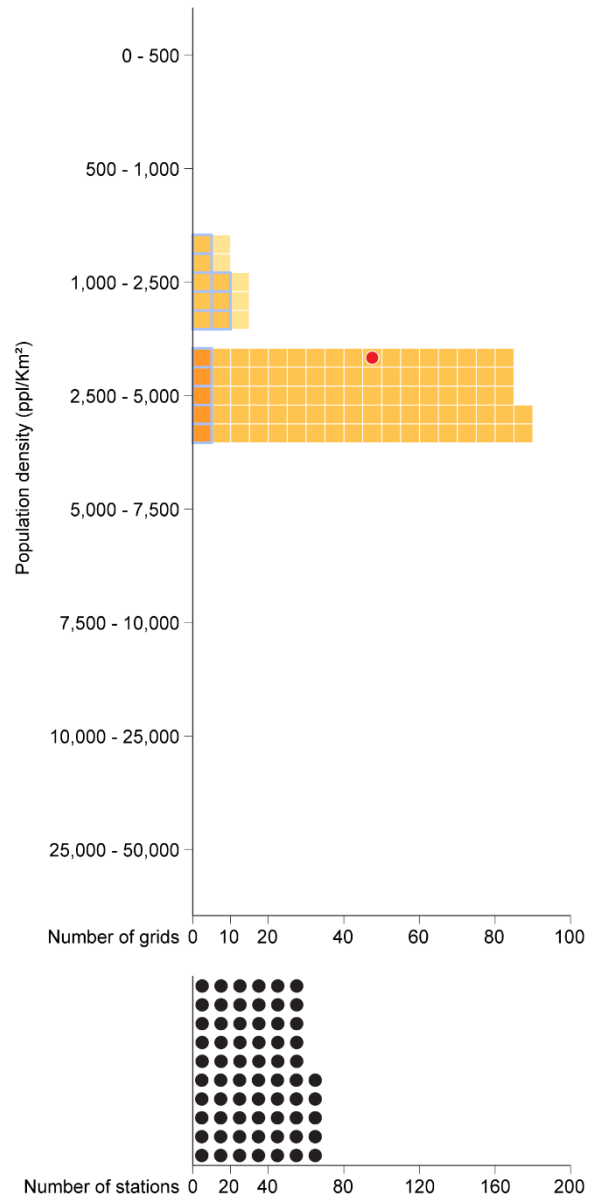
Vienna 10km x 10km

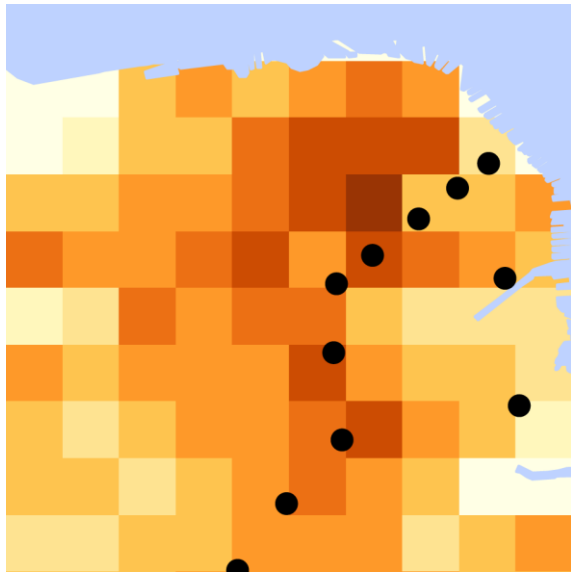


Vienna 30km x 30km

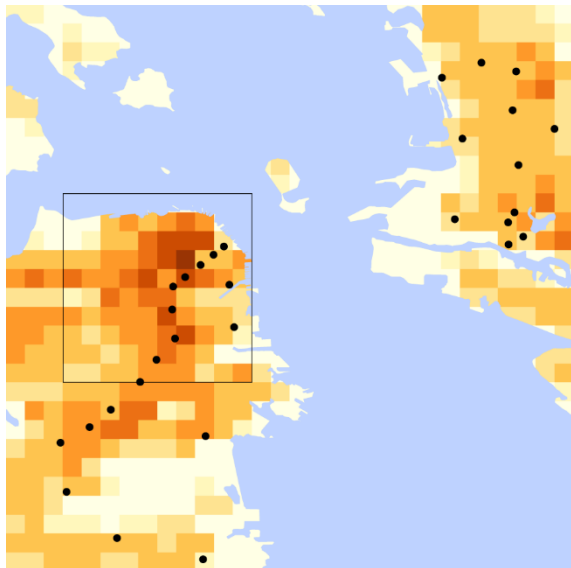


Vienna 60km x 60km

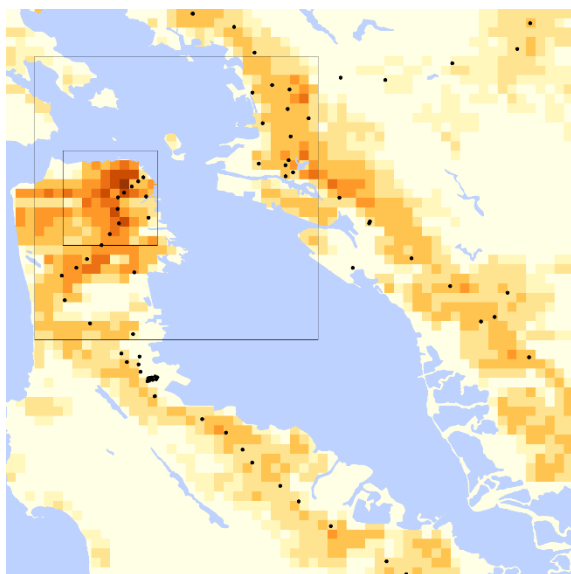




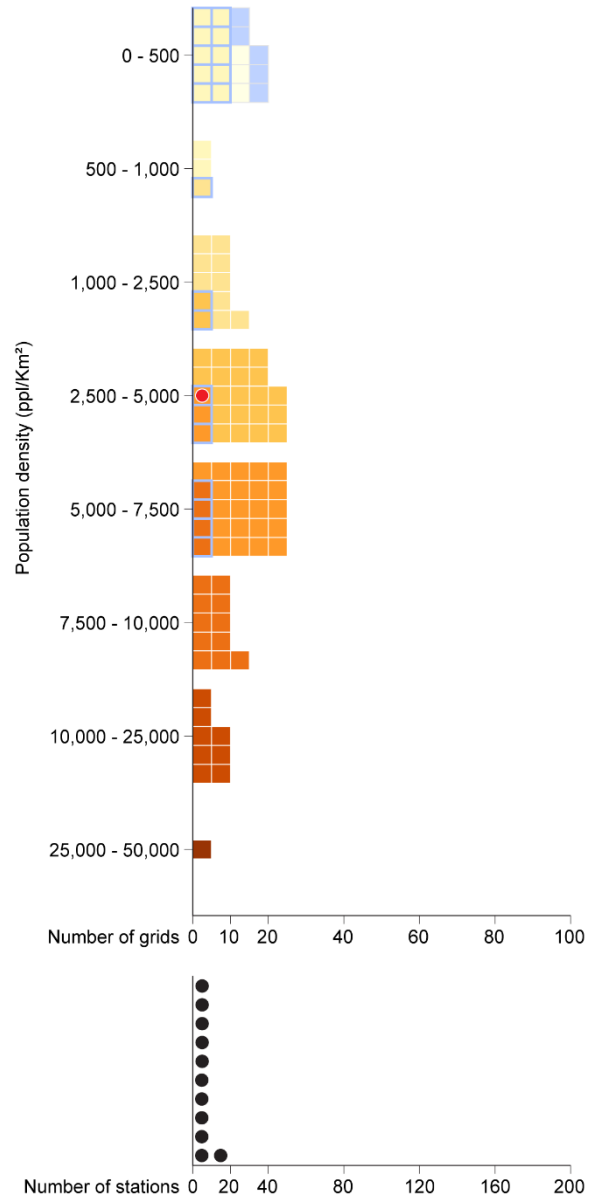
San Francisco 10km x 10km

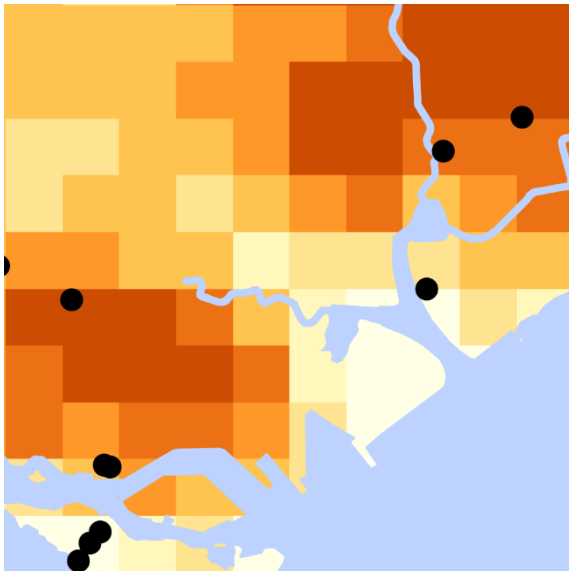


San Francisco 30km x 30km

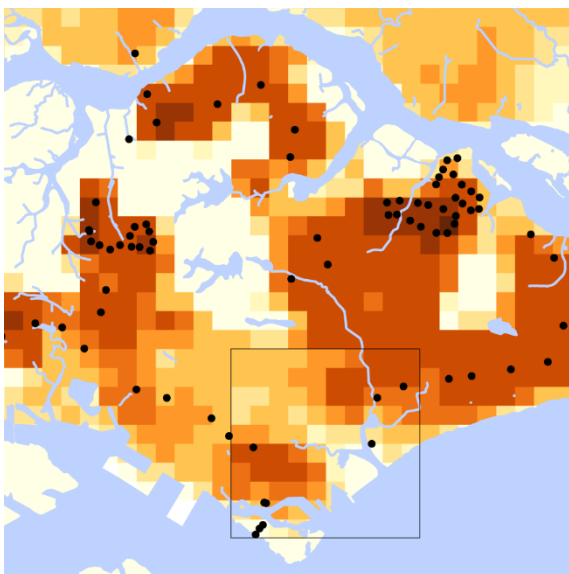


San Francisco 60km x 60km

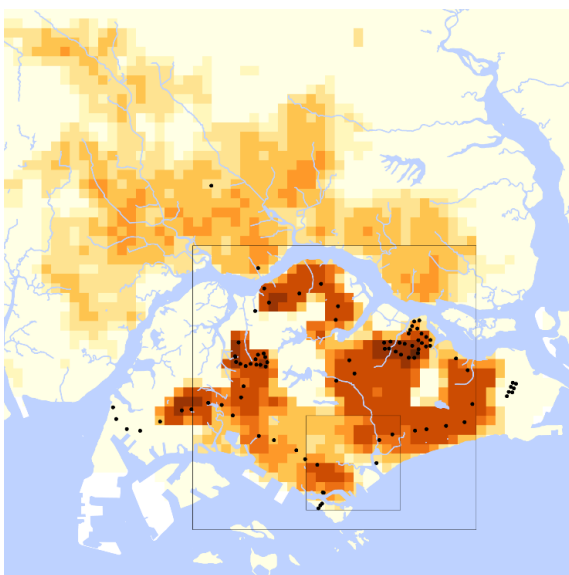




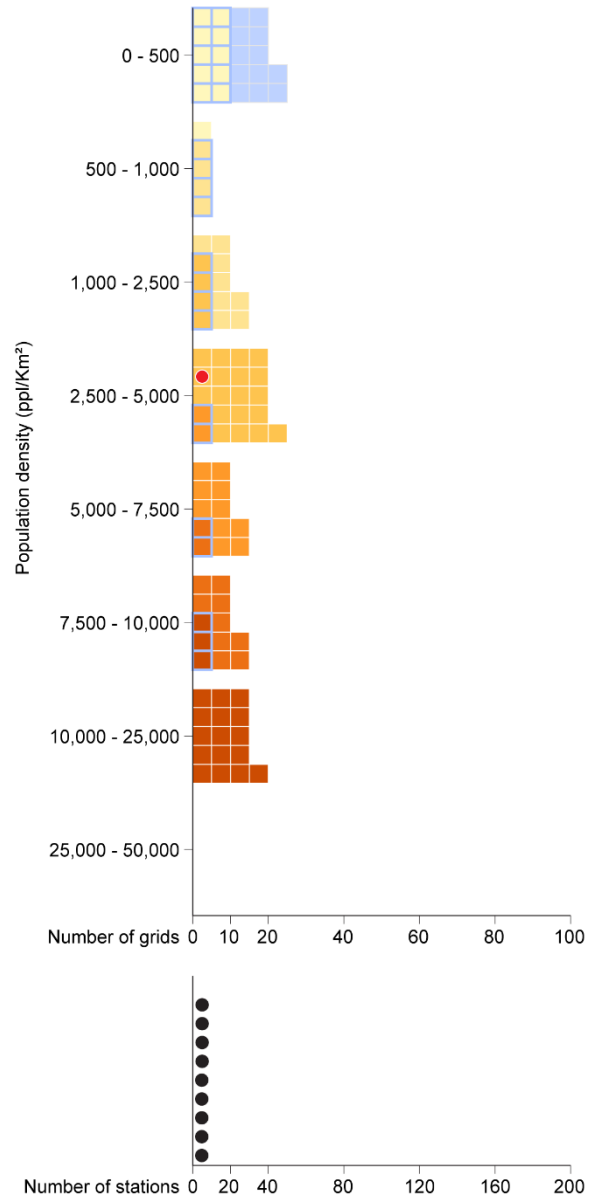
Singapore 10km x 10km

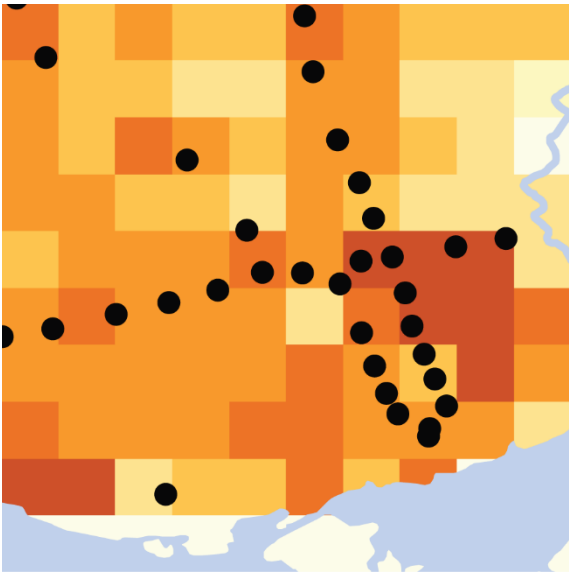


Singapore 30km x 30km

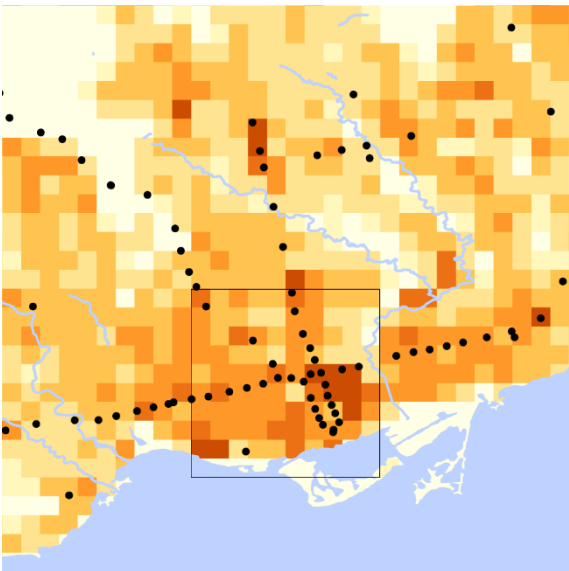


Singapore 60km x 60km

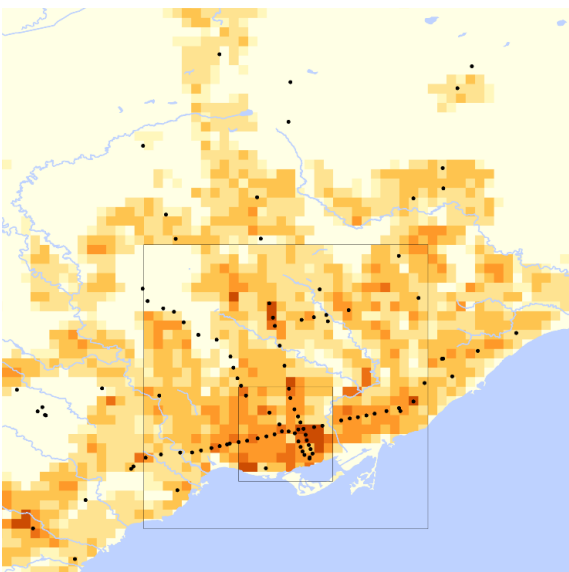




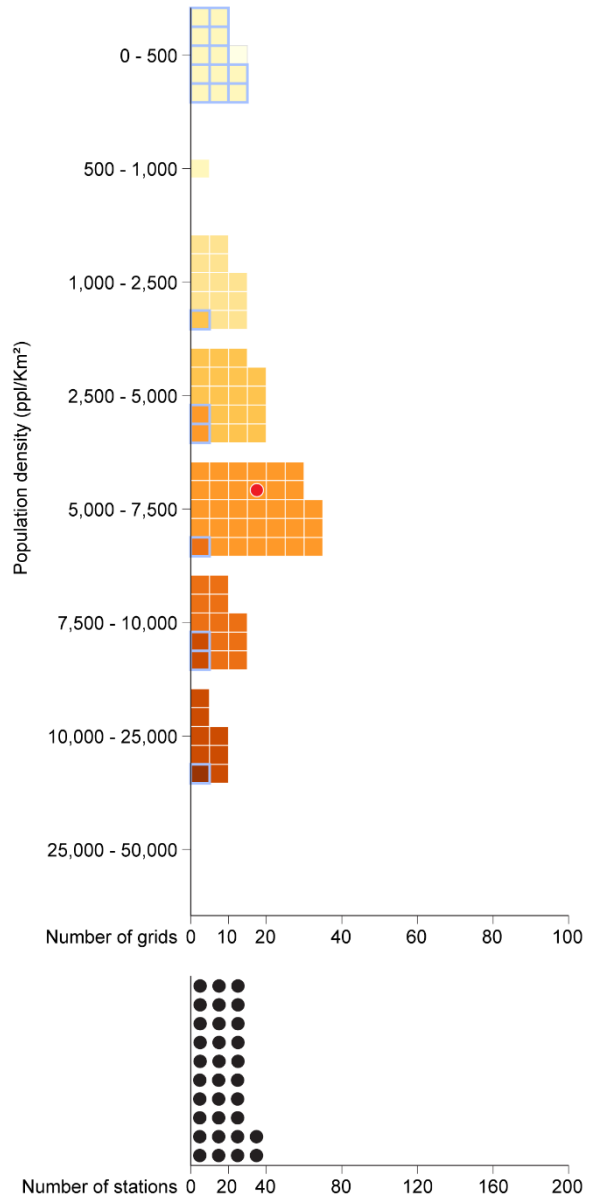
Toronto 10km x 10km

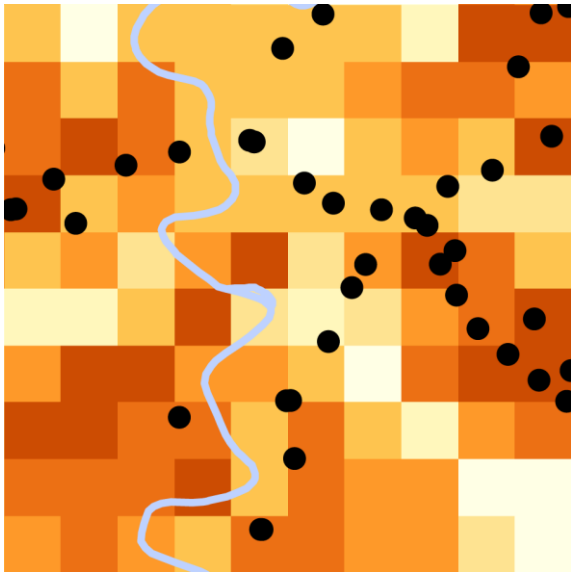


Toronto 30km x 30km

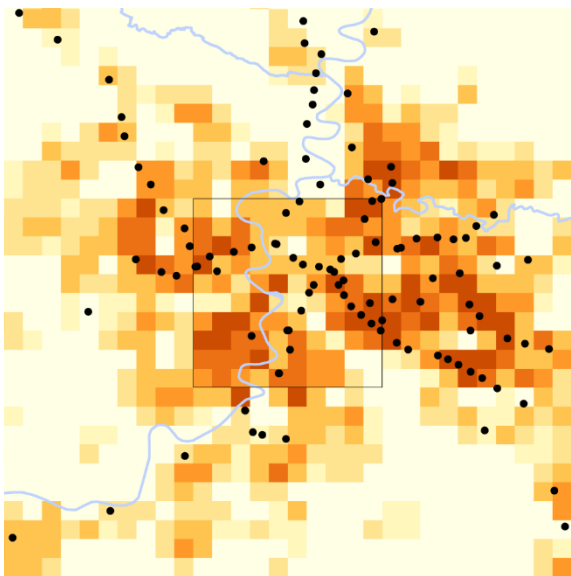


Toronto 60km x 60km

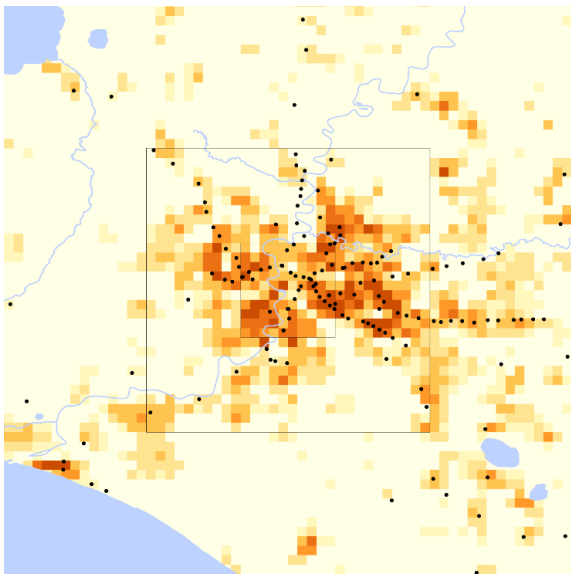




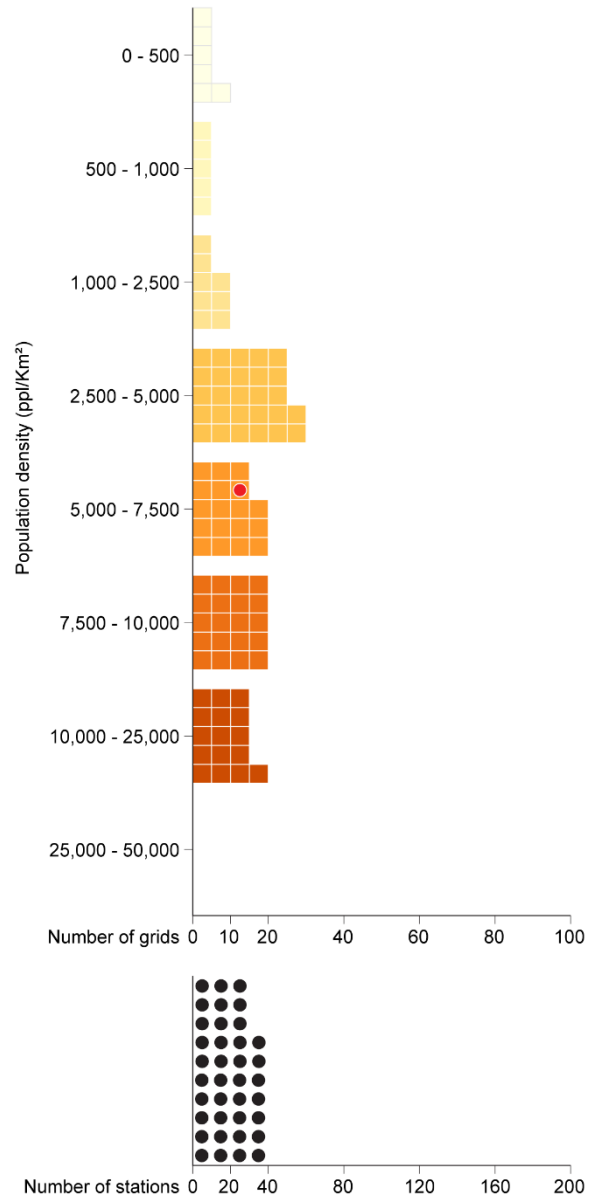
Rome 10km x 10km



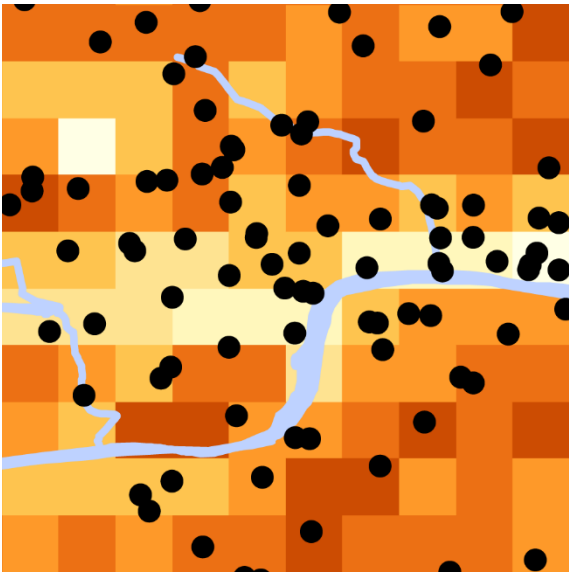
Rome 30km x 30km



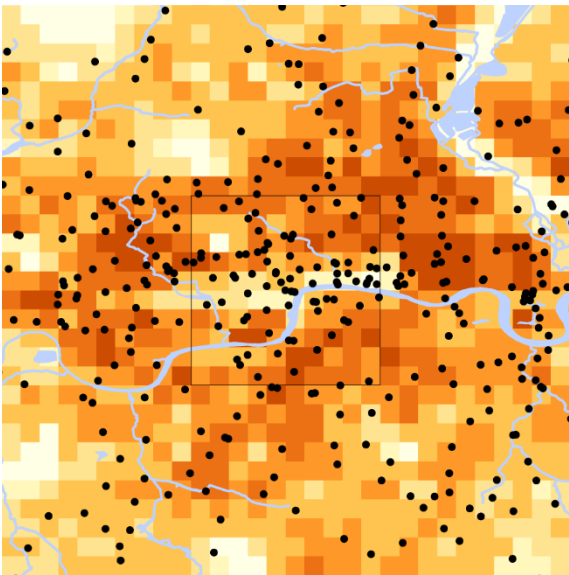
Rome 60km x 60km



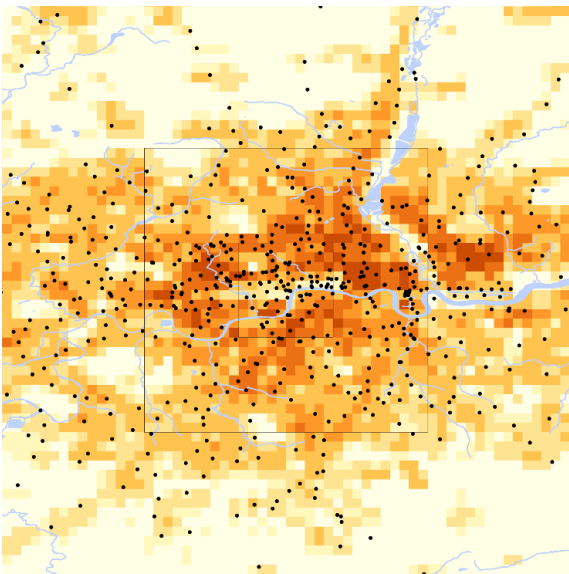




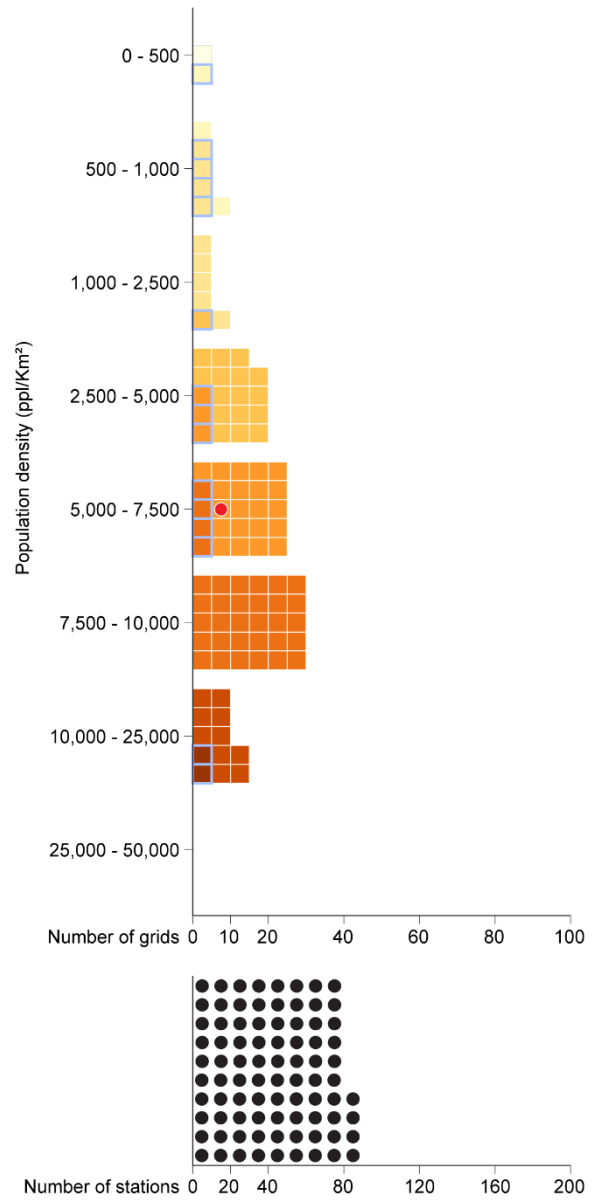
London 10km x 10km

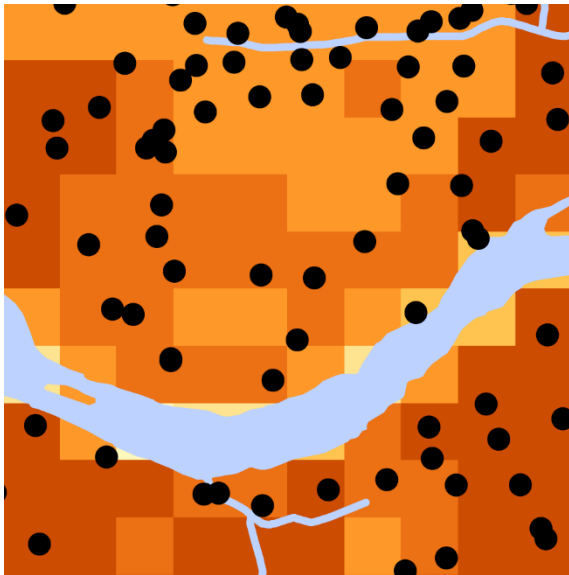


London 30km x 30km

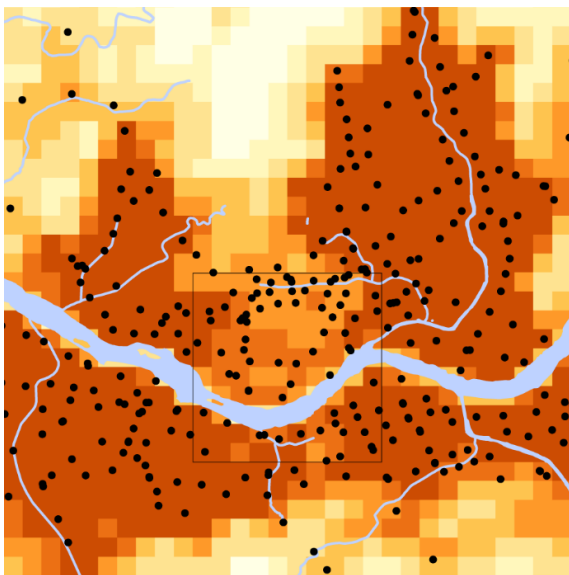


London 60km x 60km

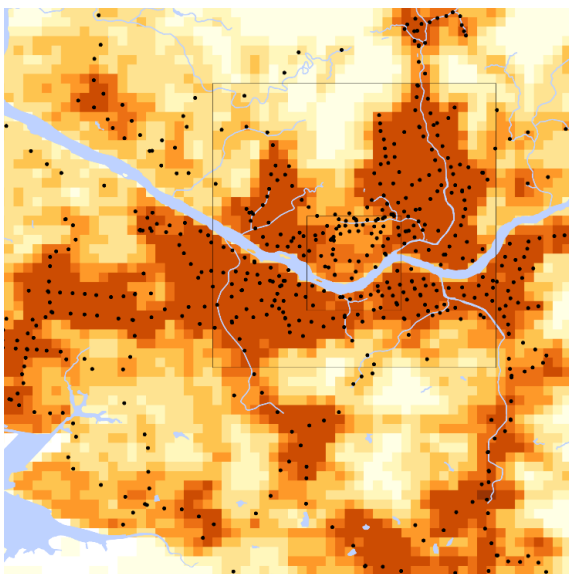




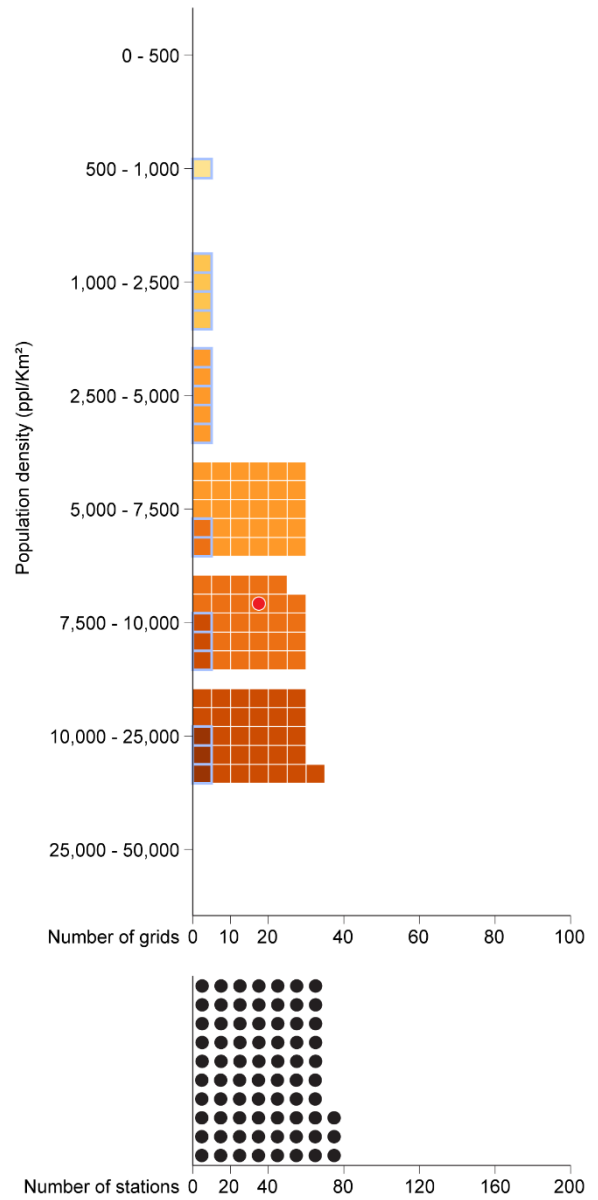
Seoul 10km x 10km

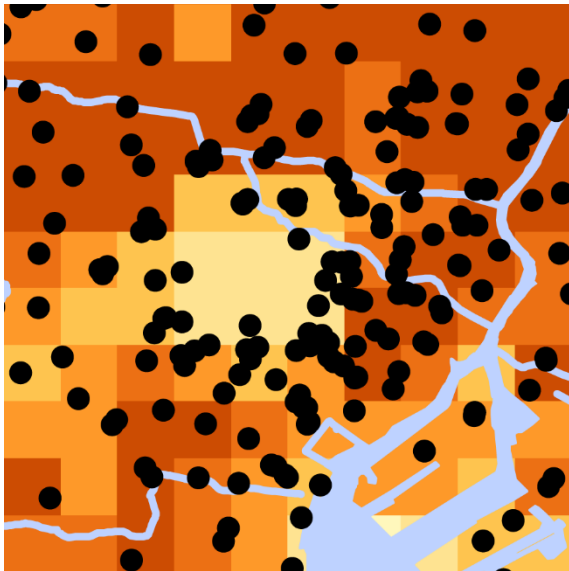


Seoul 30km x 30km

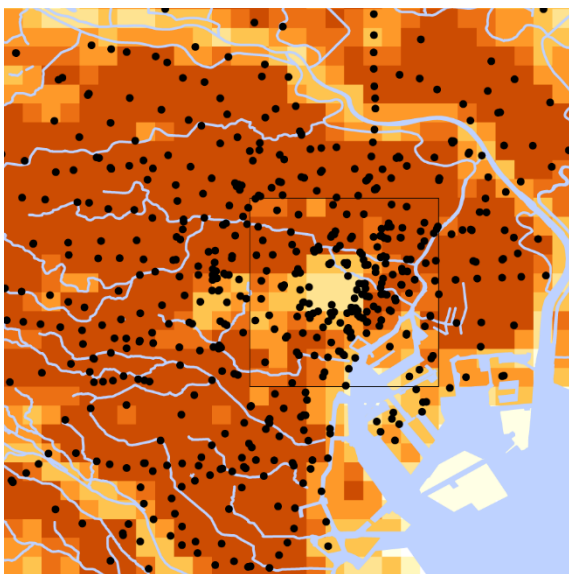


Seoul 60km x 60km

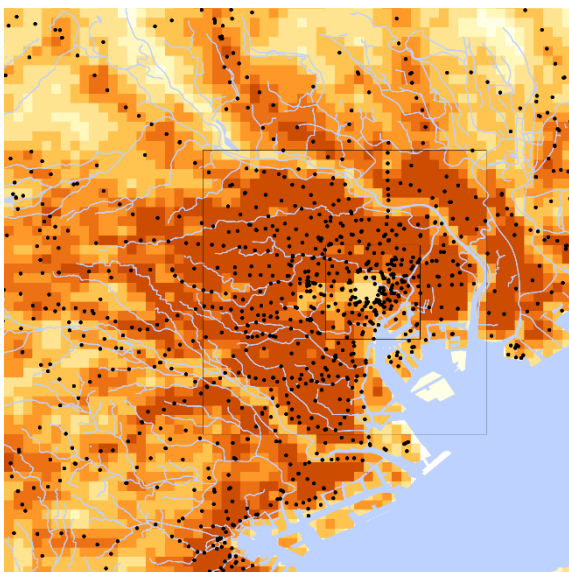




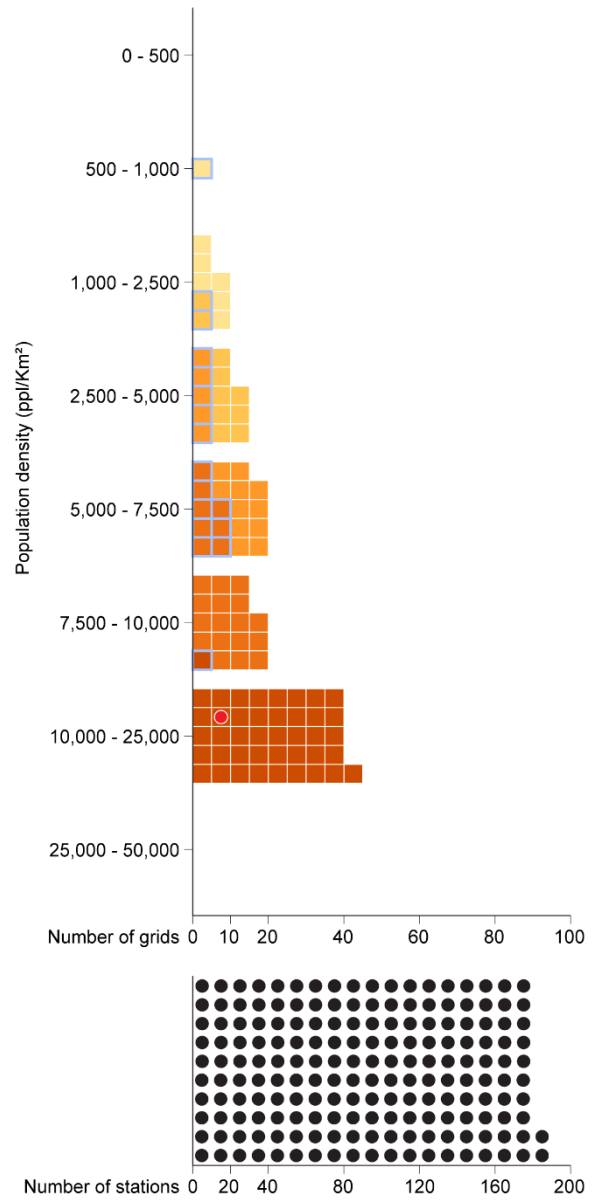
Tokyo 10km x 10km



Tokyo 30km x 30km

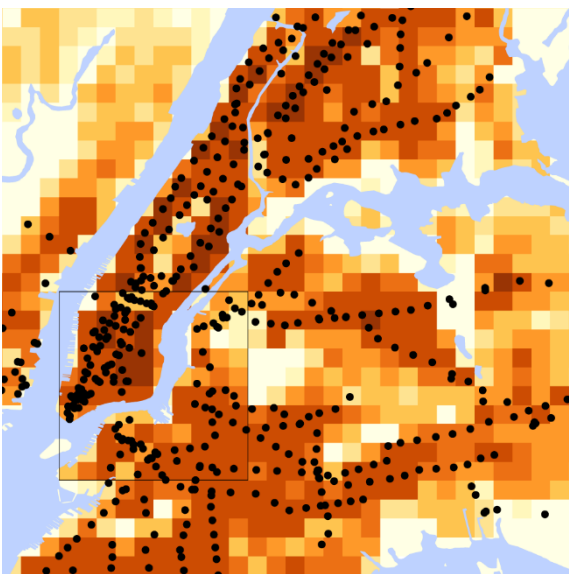


Tokyo 60km x 60km

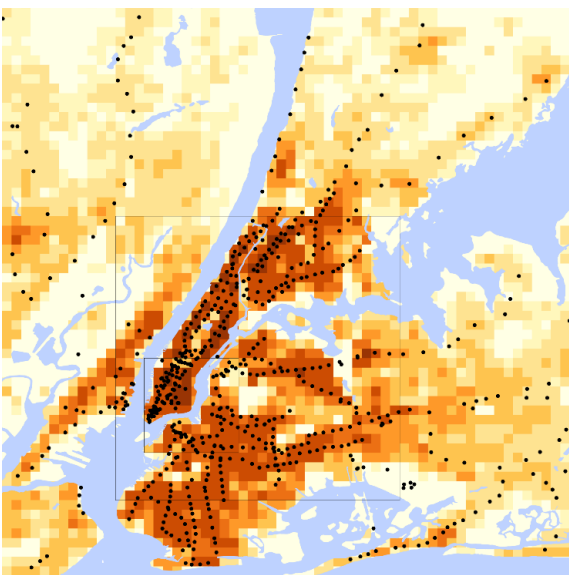




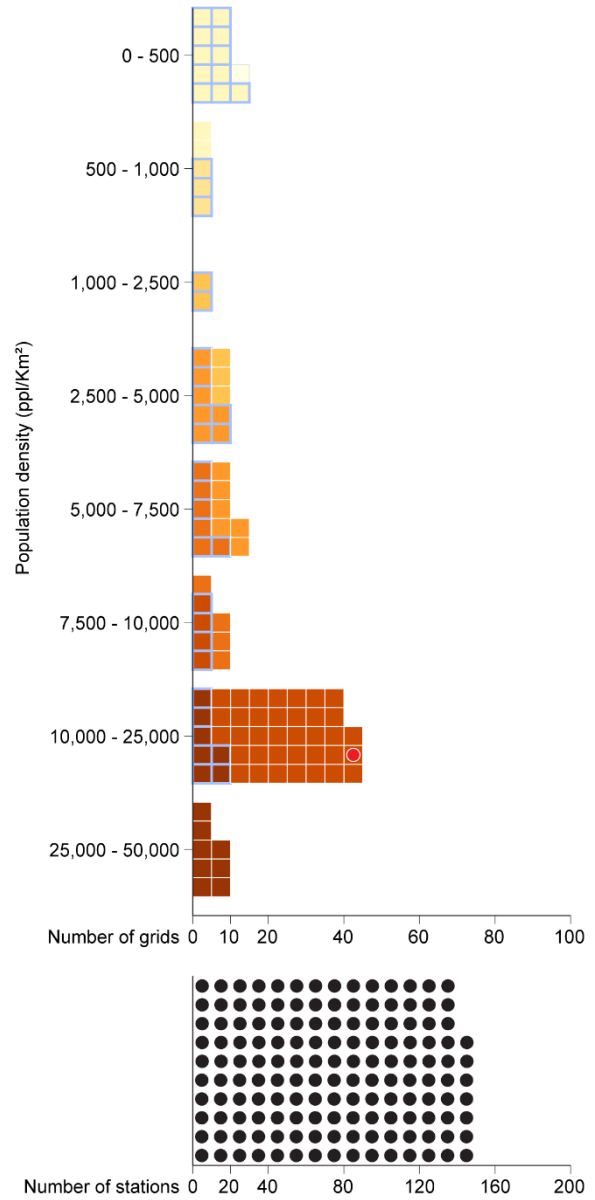
New York 10km x 10km

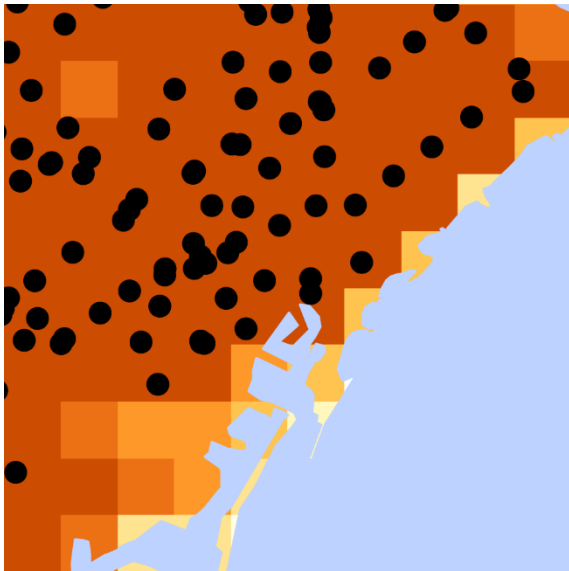


New York 30km x 30km

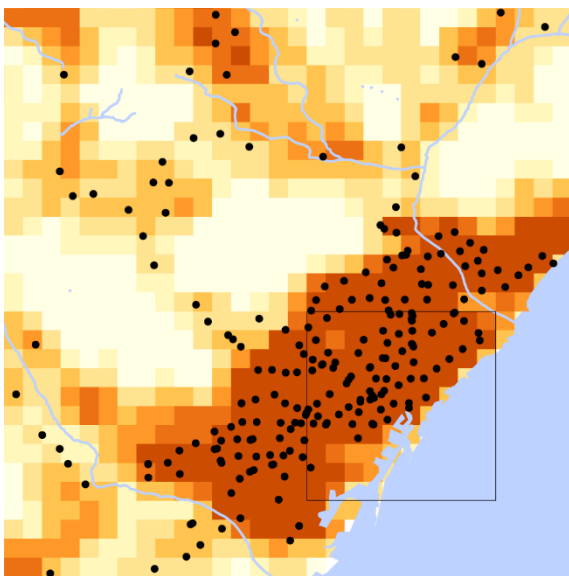


New York 60km x 60km

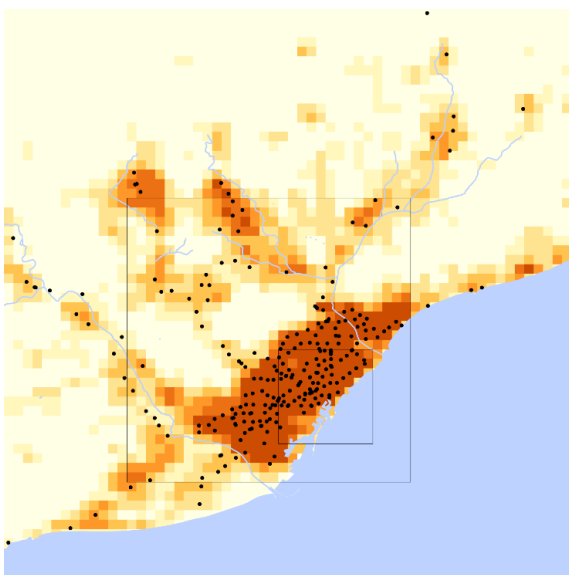




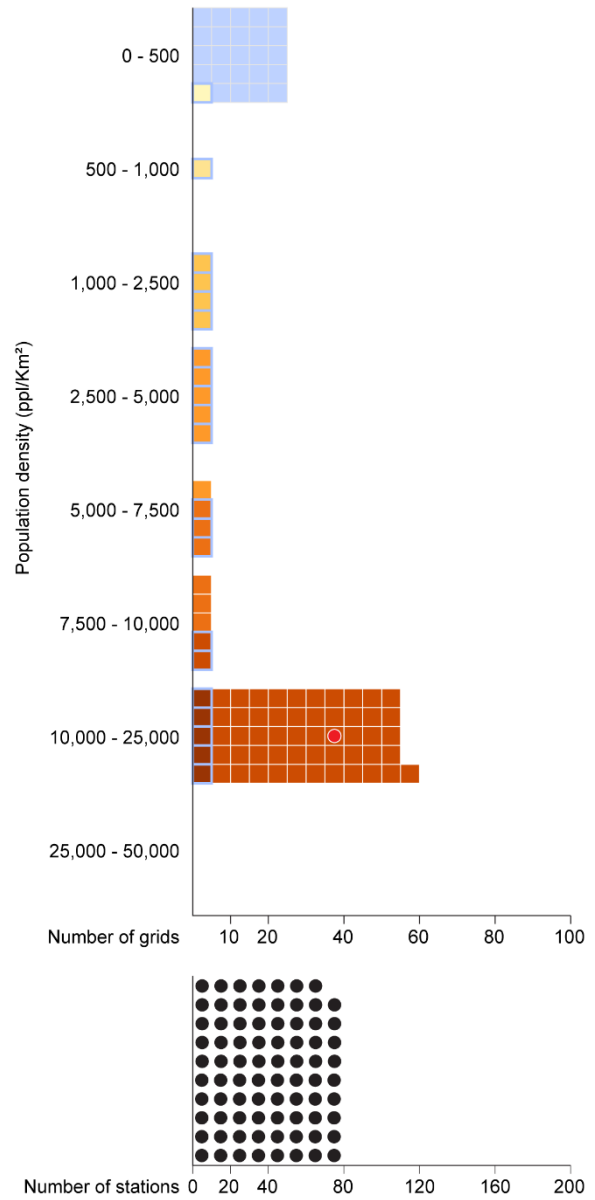
Barcelona 10km x 10km

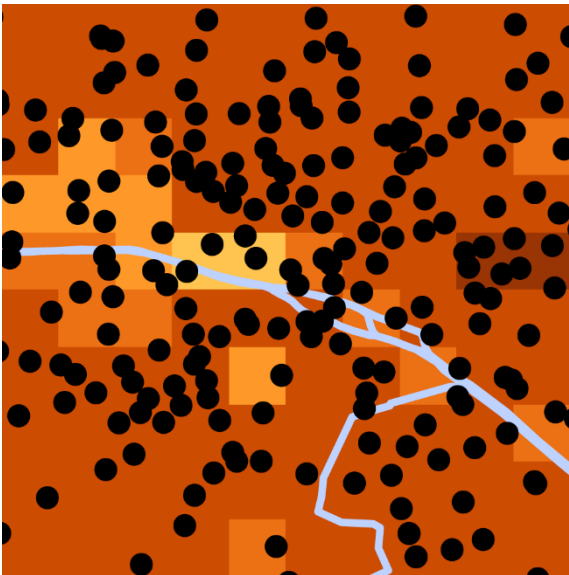


Barcelona 30km x 30km

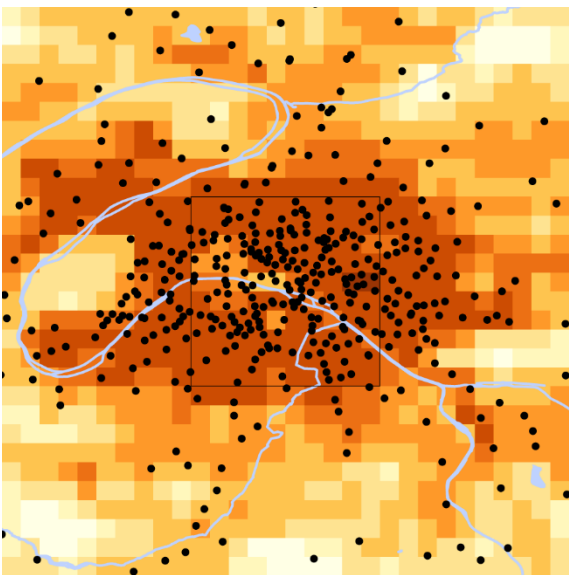


Barcelona 60km x 60km

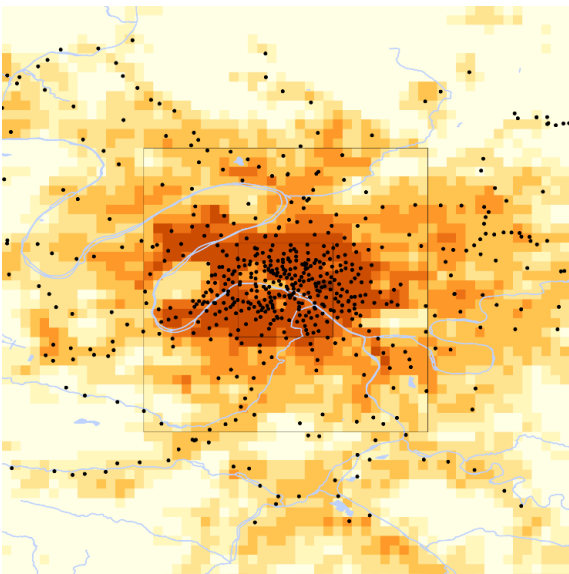




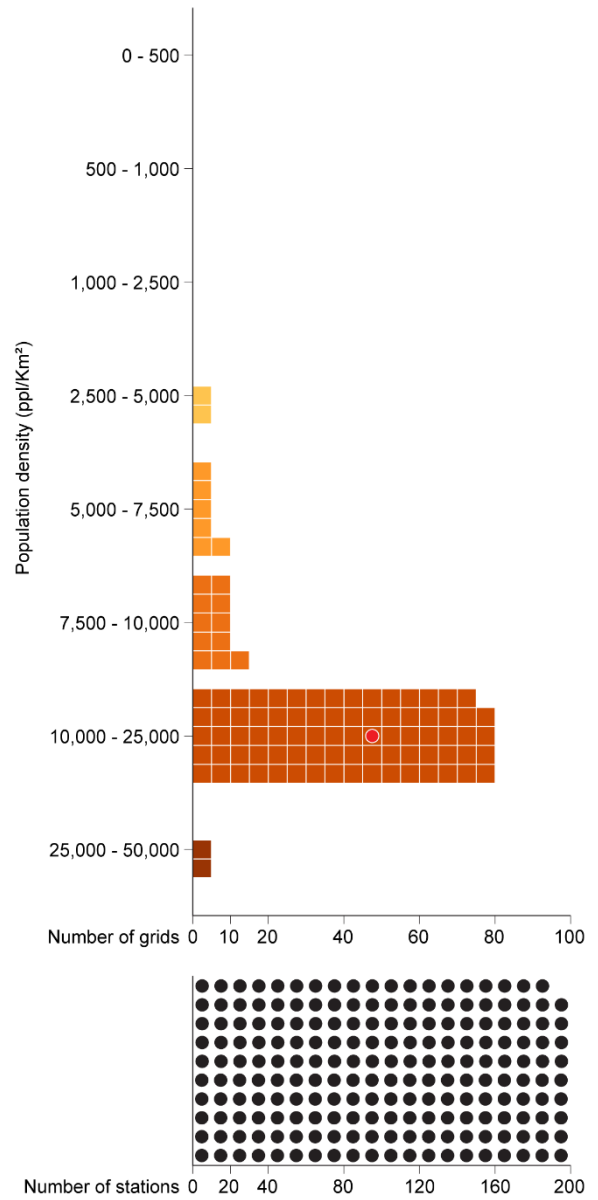
Paris 10km x 10km



Paris 30km x 30km



Paris 60km x 60km



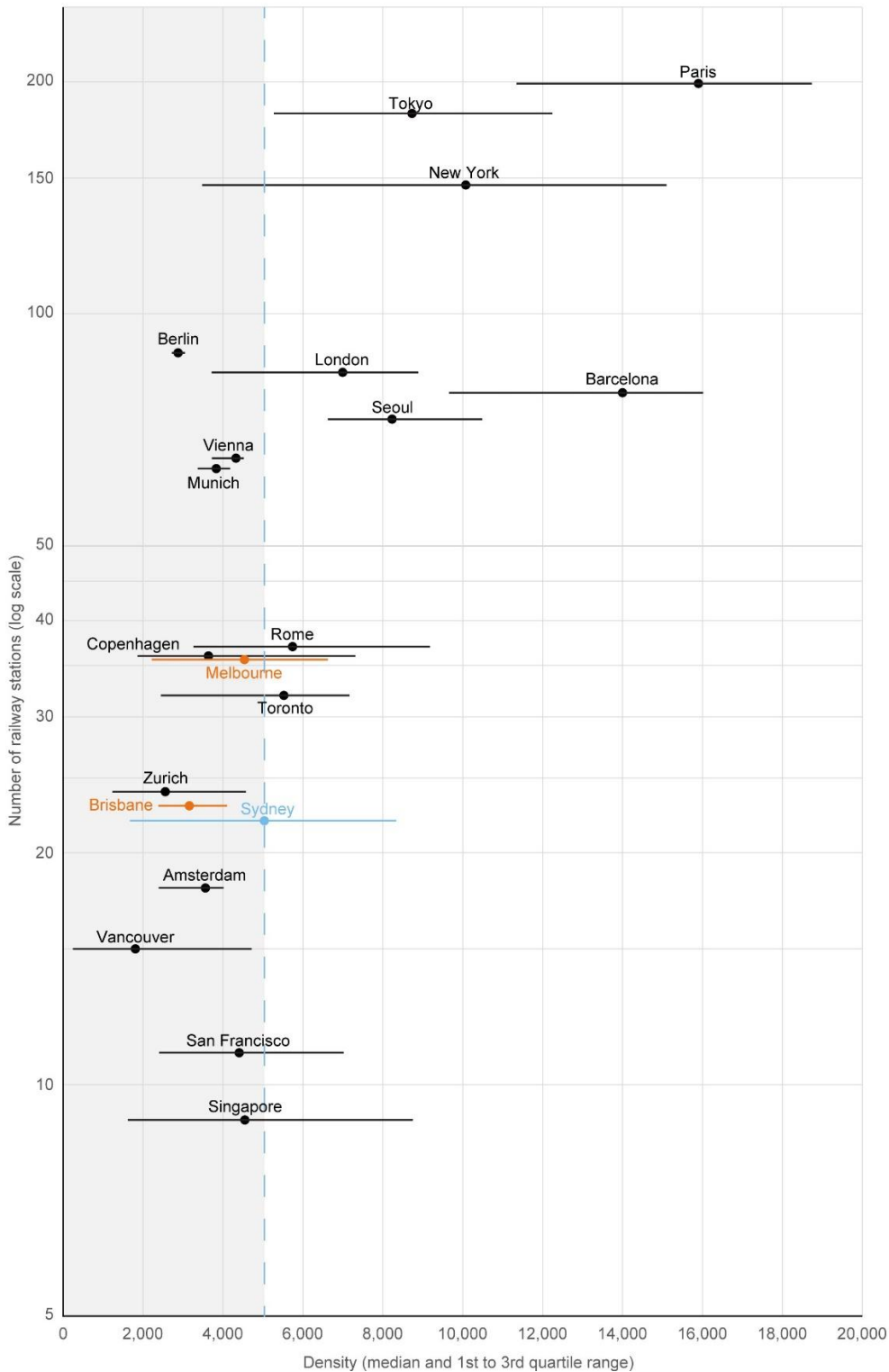


Figure 1. Summary chart - density of inner 10km x 10km area compared to number of train stations. Cities to the left of Sydney are less dense, cities higher in the graph than Sydney have more stations.

<b>City</b>	<b>Median density</b>	<b>Number of rail stations</b>
Vancouver	1,806	15
Zurich	2,558	24
Berlin	2,876	89
Brisbane	3,157	23
Amsterdam	3,558	18
Copenhagen	3,638	36
Munich	3,829	63
Vienna	4,322	65
San Francisco	4,409	11
Melbourne	4,537	36
Singapore	4,545	9
<b>Sydney</b>	<b>5,038</b>	<b>22</b>
Toronto	5,526	32
Rome	5,739	37
London	6,993	84
Seoul	8,229	73
Tokyo	8,729	182
New York	10,074	147
Barcelona	13,999	79
Paris	15,901	199

**Red** represents substantially more rail stations than Sydney

Table 1. List of cities compared in order of median density of inner 10km x 10km area – most dense is at the bottom.